



PARTS CATALOG

Published

2011/5 (May.)

0CNP3-G57700

Directions for the Parts Catalog.

1. The parts stipulated in this Parts Catalog are not necessarily standard equipped parts.
2. Parts may change without prior notice.
3. The following is an example of the Parts Catalog format.

REF.	LEV.	PARTS NO.	DESCRIPTION	Q'TY						I	R
				(A)	(B)	(C)	(D)	(E)	(F)		
1	1	729595-51390	FUEL INJECTION PUMP	1	1	1	1	1			1
1-1	1	729595-51391	FUEL INJECTION PUMP	1	1	1	1	1		N	1
		(A=E00185) (B=E00200)									
3	2	26022-060162	SCREW M 6X 16	9	9	9	9	9			
3-1	2	26022-060162	SCREW M 6X 16	4	4	4	4	4		K	
		(A=E00156) (B=E00156) (C=E00156) (D=E00156) (E=E00156)									
4	2	129470-51040	CAMSHAFT	1	1	1	1	1			
5	2	122710-51050	BEARING, ROLLER	2	2	2	2	2			
6	2	129470-51060	RETAINER	1	1	1	1	1			

Remarks
(1) BOOST COMPEMSATOR TYPE. OPTIONAL PART, TO E00155,(4JH-DT, 4JH-DTZ

① Ref. No.

The Ref. No. listed may not be in accordance with the illustration Ref. No.

(Ex.) Illustration No.

List Ref No.

1

1

(Before change)

1-1

(After change)

For interchangeable symbols N, R and K, illustrations for new parts may be abbreviated.

② Lev. (Level)

Level indication

The numbers below indicate the level of relativity towards the main part.

1 ----- Main parts (Assembly parts)

2 ----- Sub component included in " 1 ".

3 ----- Sub component included in " 2 ".

Note) Parts that are not for sale are partially illustrated but not listed.

③ Interchangeability Mark

When a part change takes place, one of the following interchangeability symbols is indicated beside the part.

Symbol	Interchangeability	Contents note
N	Old $\begin{matrix} \leftarrow \text{Yes} \\ \text{No} \rightarrow \end{matrix}$ New	New Part is interchangeable for Old Part but Old Part is not interchangeable for New Part.
Q	Old $\begin{matrix} \leftarrow \text{No} \\ \text{Yes} \rightarrow \end{matrix}$ New	New Part is not interchangeable for Old Part but Old Part is interchangeable for New Part.
R	Old $\begin{matrix} \leftarrow \text{Yes} \\ \text{Yes} \rightarrow \end{matrix}$ New	New/ Old Parts are both interchangeable.
S	Old $\begin{matrix} \leftarrow \text{No} \\ \text{No} \rightarrow \end{matrix}$ New	New/ Old Parts are both not interchangeable.
W		Part newly added.
Z		Part discontinued.
F		Not interchangeable by a single part but interchangeable together with related parts.
K		Changes only for used parts quantities.

④ Effective Machine No.

When a part changes, the effective Machine No. will be indicated in the (A)-(F) column.

Product Symbol	Product No.	Product Symbol	Product No.
C	Clutch No. Compressor No.	F	Machine No. (Agricultural Equip.)
D	Drive No.	M	Machine No.
E	Engine No.		

Note 1) A date may follow the symbol. (Ex.) 1996.01

Note 2) "XXXXX" and "ZZZZZ" are for parts that could not be predicted or for engine models that could not be identified.

Note 3) (A=E00185) is the E (Engine Serial Number) for the column (A) model (in this case 4JH-DT) after the parts design change.

⑤ Remarks Mark

Figures or alphabets (symbols) are entered in the remarks column.

The comments (remarks) on parts that are indicated at the bottom of the illustration are the same symbols as those stated above.

CONTENTS

MODEL : TE500(
PC NO : 0CNP3-G57700

Fig.No.	GROUP NAME
	ENGINE UNIT(MODEL GA140E-SKLA)
1.	CYLINDER BLOCK
2.	CYLINDER HEAD & BONNET
3.	AIR CLEANER & MUFFLER
4.	CRANKSHAFT,PISTON & CAMSHAFT
5.	FUEL OIL TANK & FUEL OIL LINE
6.	CARBURETOR
7.	GOVERNOR & CONTROL DEVICE
8.	FLY.MAGNET & STARTING DEVICE
9.	LABEL

	PULLEY & TENSION SEC
10.	ENGINE MOUNTING
11.	ENGINE & MAIN PULLEYS
12.	TENSION CLUTCH

	TRANSMISSION UNIT
13.	TRANSMISSION CASE
14.	MAIN SHAFT
15.	COUNTER SHAFT
16.	FINAL SHAFT
17.	AXLE
18.	MAIN CHANGE

	WHEEL SECTION
19.	FENDER

	HANDLE SECTION
20.	HANDLE COLUMN
21.	HANDLE

Fig.No.	GROUP NAME
22.	CONTROL LEVER(E

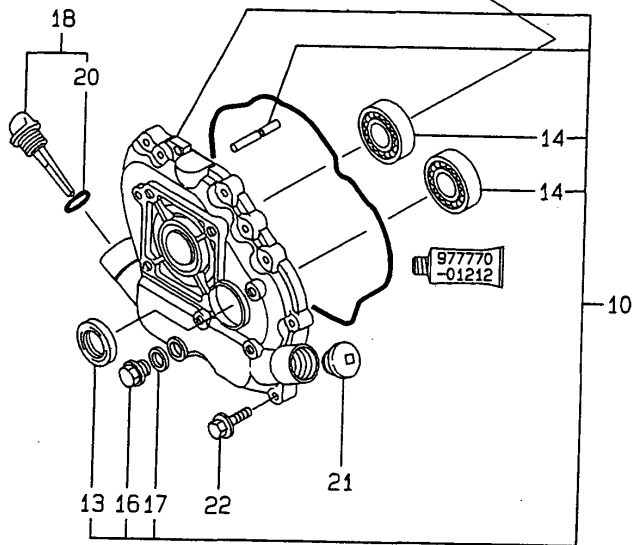
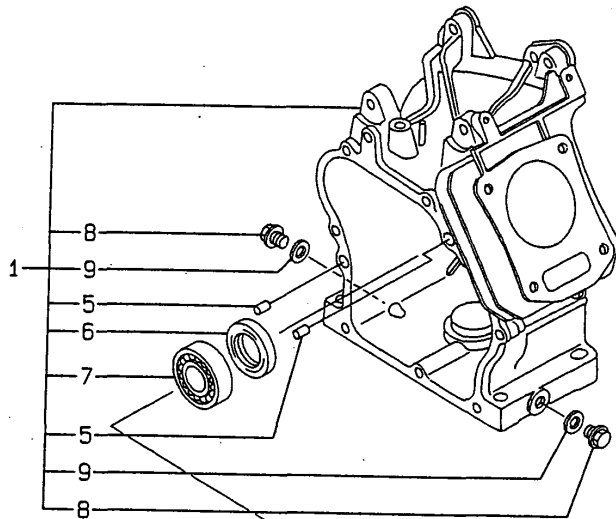
	ENGINE FRAME SECTION
23.	ENGINE FRAME
24.	REAR HITCH
25.	BELT COVER
26.	BONNET W

	LABELS & ACCESSORIES
27.	UNIVERSAL HITCH
28.	ELECTRICAL PARTS
29.	LABELS
30.	TOOLS & ACCESSORIES

	TILLING SECTION
31.	TILLING ROTOR(E
32.	TILLING ROTOR(EB

Fig.1. CYLINDER BLOCK

1. CYLINDER BLOCK



Remarks
 (REMARKS)"EFFECTIVE MACHINE NO." OF
 ENGINE IS INDICATED ON THE
 ENGINE LABEL WHICH IS SHOWN
 IN FIG.8.

OCNP3-G57700 1. CYLINDER BLOCK

(A)=GA140E-SKL1

(B)=

(C)=

(D)=

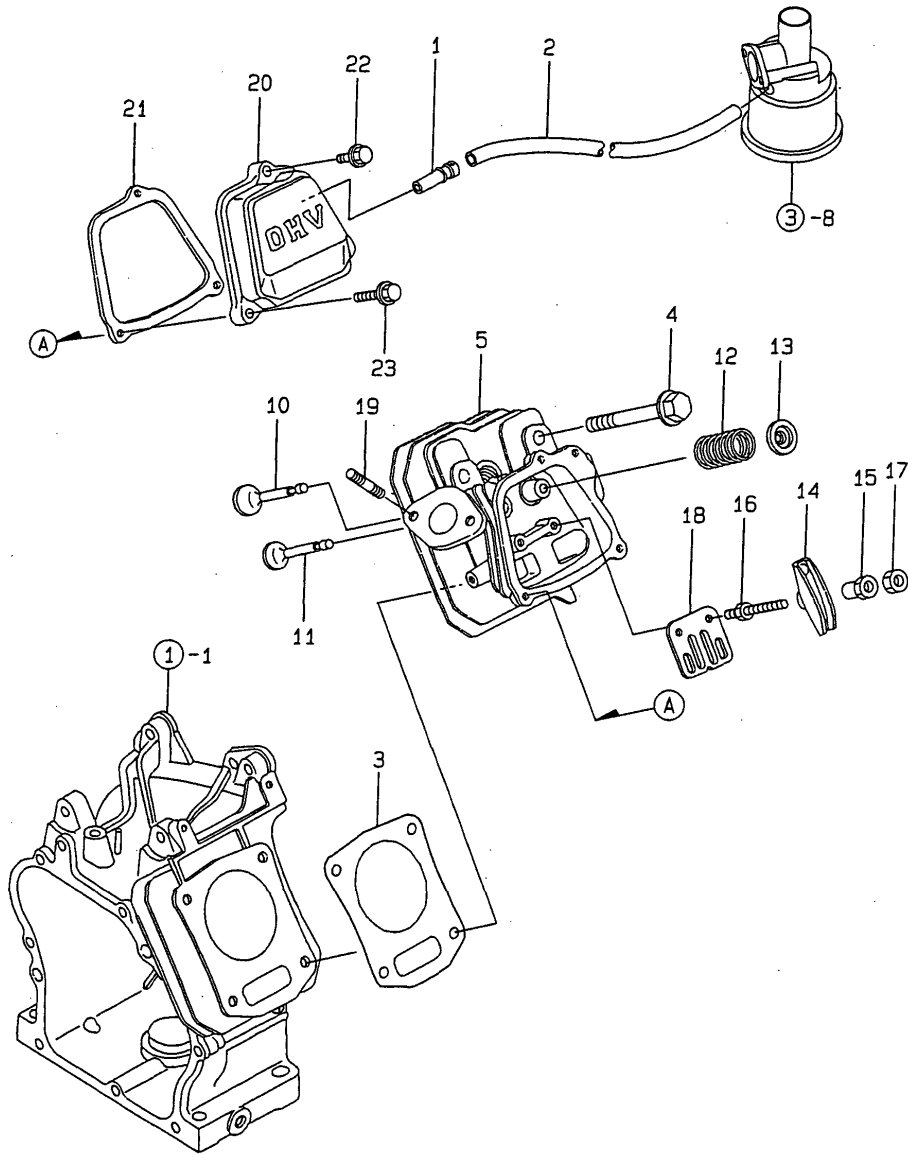
(E)=

(F)=

REF.	LEV.	PARTS NO.	DESCRIPTION	QTY						I	R	
				(A)	(B)	(C)	(D)	(E)	(F)			
1	1	760598-01560	BLOCK ASSY, CYLINDER	1								
5	2	114270-01600	PARALLEL PIN 8X12	2								
6	2	160610-02220	SEAL, OIL	1								
7	2	24101-062040	BALL BEARING	1								
8	2	160610-01690	PLUG, DRAIN	2								
9	2	104200-59170	GASKET 12	2								
10	1	760590-01500	COVER ASSY, SIDE	1								
13	2	160610-02220	SEAL, OIL	1								
14	2	24101-062040	BALL BEARING	2								
16	2	160610-01690	PLUG, DRAIN	1								
17	2	104200-59170	GASKET 12	1								
18	1	160710-01760	CAP, W/LUB.OIL GAUGE	1								
20	2	24311-000180	O-RING 1A P-18.0	1								
21	1	160110-01870	PLUG, RUBBER W/SCREW	1								
22	1	26476-060252	BOLT M 6X 25,TAPPING	8								

Fig.2. CYLINDER HEAD & BONNET

2. CYLINDER HEAD & BONNET



OCNP3-G57700 2. CYLINDER HEAD & BONNET

(A)=GA140E-SKL1

(B)=

(C)=

(D)=

(E)=

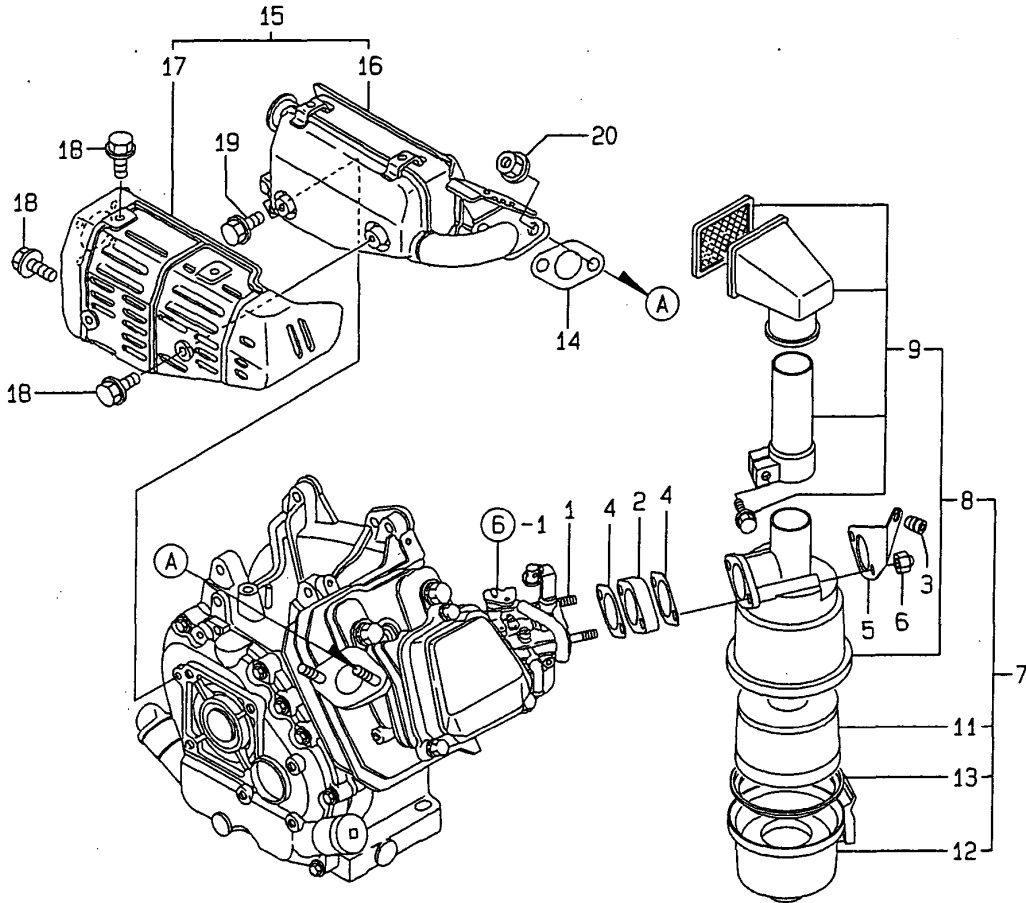
(F)=

REF.	LEV.	PARTS NO.	DESCRIPTION	QTY						I	R
				(A)	(B)	(C)	(D)	(E)	(F)		
1	1	160690-03050	BREATHER	1							
2	1	160593-03180	HOSE, BREATHER	1							
3	1	160598-01330	GASKET, HEAD	1							
4	1	160610-04201	BOLT M 8X 53	4							
5	1	160590-11010	HEAD ASSY, CYLINDER	1							
10	1	160590-11100	VALVE, INTAKE	1							
11	1	160590-11110	VALVE, EXHAUST	1							
12	1	160690-11120	SPRING, VALVE	2							
13	1	160690-11180	RETAINER, SPRING	2							
14	1	160690-11200	ARM, ROCKER	2							
15	1	160690-11221	PIVOT,ROCKER ARM	2							
16	1	160690-11271	BOLT	2							
17	1	160690-11280	NUT M6X 0.5	2							
18	1	160690-11290	PLATE, GUIDE	1							
19	1	26216-080182	STUD M 8X 18 PLATED	2							
20	1	160690-11300	BONNET	1							
21	1	160690-11310	GASKET, BONNET	1							
22	1	26106-060202	BOLT M 6X 20 PLATED	1							
23	1	26106-060352	BOLT M 6X 35 PLATED	2							

Remarks
 (REMARKS)"EFFECTIVE MACHINE NO." OF
 ENGINE IS INDICATED ON THE
 ENGINE LABEL WHICH IS SHOWN
 IN FIG.8.

Fig.3. AIR CLEANER & MUFFLER

3. AIR CLEANER & MUFFLER



OCNP3-G57700 3. AIR CLEANER & MUFFLER

(A)=GA140E-SKL1

(B)=

(C)=

(D)=

(E)=

(F)=

REF.	LEV.	PARTS NO.	DESCRIPTION	QTY						I	R
				(A)	(B)	(C)	(D)	(E)	(F)		
1	1	160598-04600	SCREW	2							
2	1	160690-12261	SPACER, AIR CLEANER	1							
3	1	160763-12600	GROMMET, AIR CLEANER	1							
4	1	160610-56150	GASKET, CARBURETOR	2							
5	1	160598-56250	STAY, CHOKE	1							
6	1	26657-060002	CAP NUT M 6	2							
7	1	160598-12500	AIR CLEANER CMP	1							
8	2	160598-12600	BODY, ASSY	1							
9	3	160598-12610	PIPE CMP	1							
11	2	160598-12630	BODY	1							
11-1	2	160492-12630	ELEMENT ASSY	1							S
(A=FROM 1ST)											
12	2	160598-12640	CAP CMP	1							
12-1	2	160492-12940	SUMP ASSY, LUB. OIL	1							S
(A=FROM 1ST)											
14	1	160690-13200	GASKET, MUFFLER	1							
15	1	160598-13600	SILENCER ASSY	1							
16	2	160598-13510	MUFFLER	1							
17	2	160692-13530	COVER, MUFFLER	1							
18	1	114252-13950	BOLT M 6X 8 PLATED	5							
19	1	26106-080122	BOLT M 8X 12 PLATED	1							
20	1	26366-080002	NUT M 8	2							

Remarks
 (REMARKS)"EFFECTIVE MACHINE NO." OF
 ENGINE IS INDICATED ON THE
 ENGINE LABEL WHICH IS SHOWN
 IN FIG.8.

Fig.4. CRANKSHAFT,PISTON & CAMSHAFT

4. CRANKSHAFT,PISTON & CAMSHAFT

(A)=GA140E-SKL1

(B)=

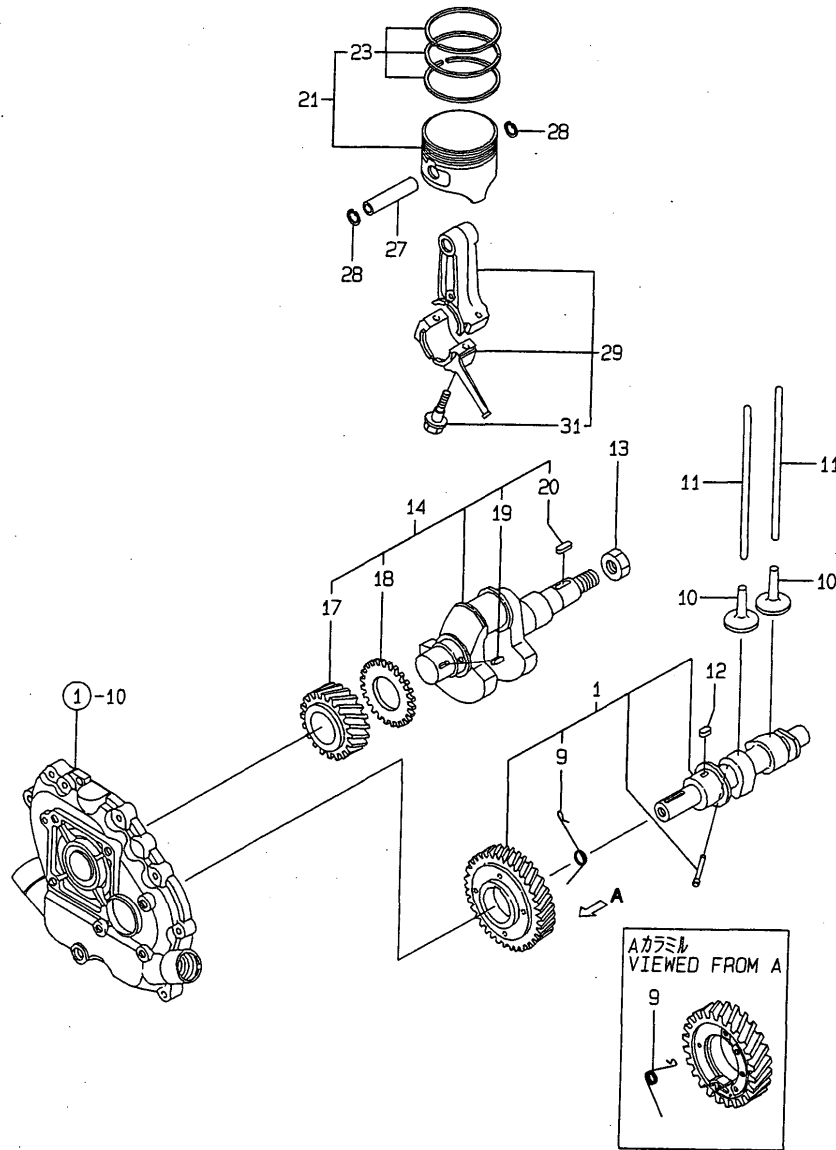
(C)=

(D)=

(E)=

(F)=

4. CRANKSHAFT,PISTON & CAMSHAFT

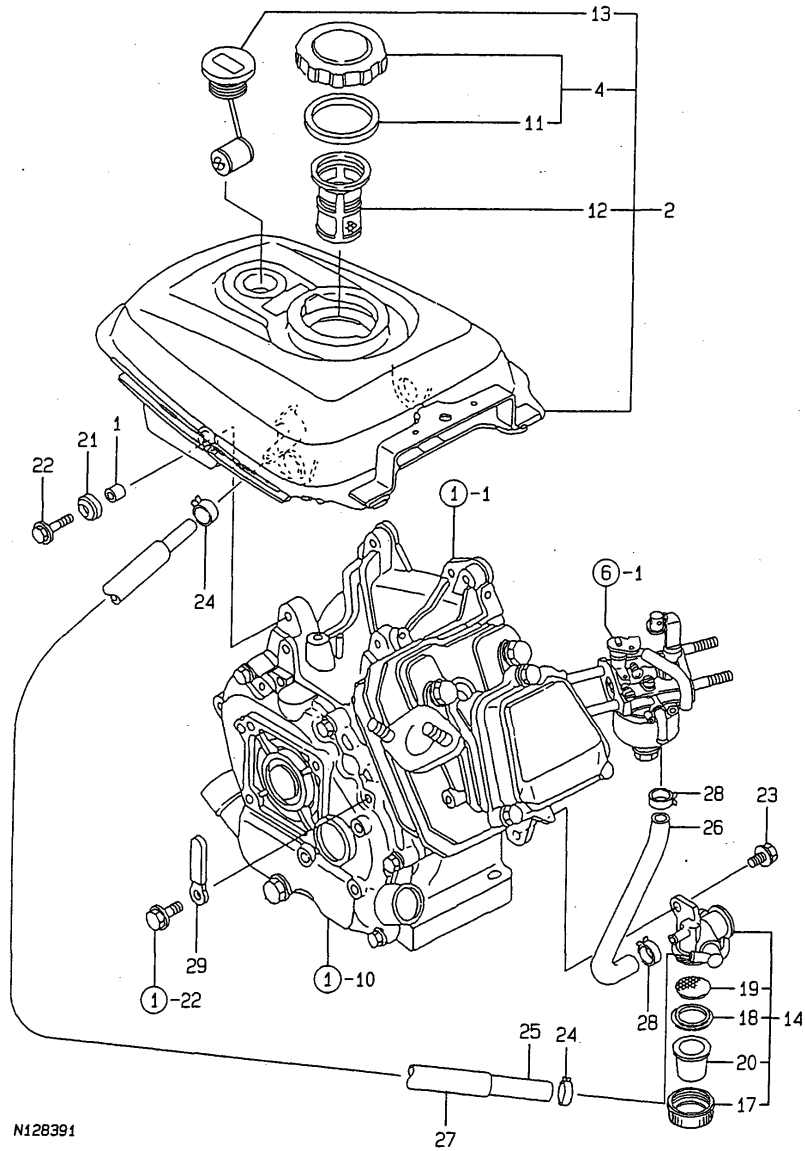


REF.	LEV.	PARTS NO.	DESCRIPTION	QTY						I	R
				(A)	(B)	(C)	(D)	(E)	(F)		
1	1	160592-14051	CAMSHAFT ASSY	1							
9	2	160590-14571	SPRING, DECOMP.	1							
10	1	160490-14200	TAPPET	2							
11	1	160590-14400	ROD, PUSH	2							
12	1	22512-040120	KEY 4X 12	1							
13	1	160610-04910	NUT M14	1							
14	1	760590-21700	CRANKSHAFT ASSY	1							
17	2	160590-21200	GEAR, CRANKSHAFT	1							
18	2	160590-21210	GEAR, IDLE	1							
19	2	160610-21290	KEY 4X 10	1							
20	2	22512-040160	KEY 4X 16	1							
21	1	160598-22010	PISTON W/RING	1							
23	2	760598-22500	RING SET, PISTON	1							
27	1	160590-22300	PIN, PISTON	1							
28	1	22252-000130	CIRCLIP 13	2							
29	1	760590-23700	ROD ASSY, CONNECTING	1							
31	2	26106-060302	BOLT M 6X 30 PLATED	2							

Remarks
 (REMARKS)"EFFECTIVE MACHINE NO." OF
 ENGINE IS INDICATED ON THE
 ENGINE LABEL WHICH IS SHOWN
 IN FIG.8.

Fig.5. FUEL OIL TANK & FUEL OIL LINE

5. FUEL OIL TANK & FUEL OIL LINE



N128391

Remarks
(REMARKS)"EFFECTIVE MACHINE NO." OF
ENGINE IS INDICATED ON THE
ENGINE LABEL WHICH IS SHOWN
IN FIG.8.

OCNP3-G57700 5. FUEL OIL TANK & FUEL OIL LINE

(A)=GA140E-SKL1

(B)=

(C)=

(D)=

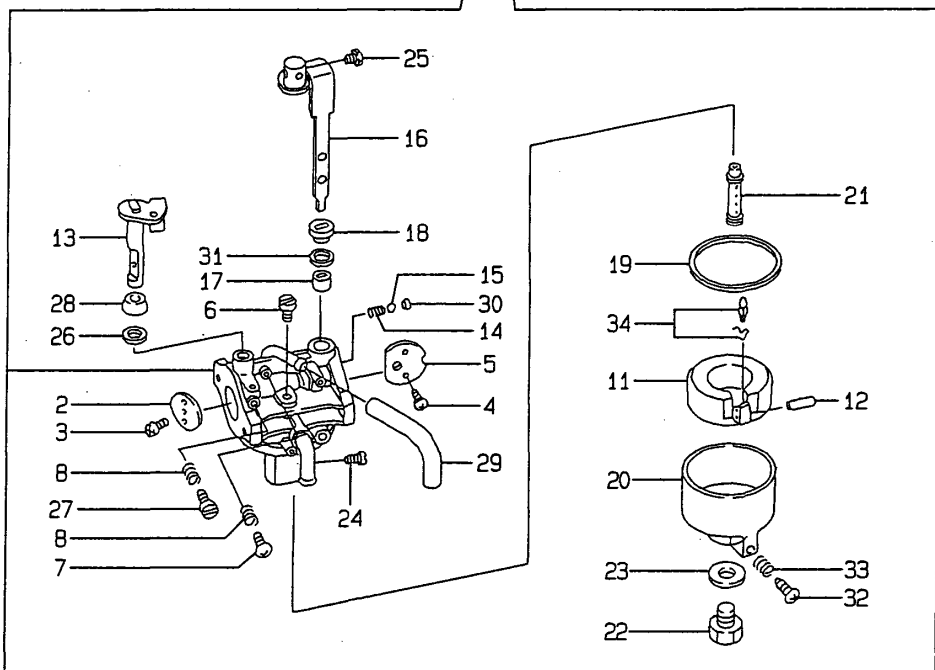
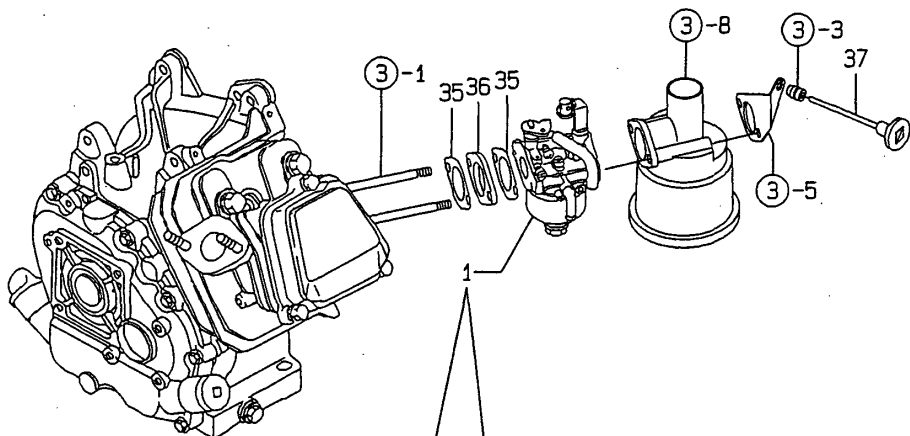
(E)=

(F)=

REF.	LEV.	PARTS NO.	DESCRIPTION	QTY						I	R
				(A)	(B)	(C)	(D)	(E)	(F)		
1	1	114250-45310	COLLAR	4							
2	1	760593-55703	TANK,FUEL(WHITE)(14)	1							
4	2	160710-55061	CAP ASSY, FUEL TANK	1							
11	3	160393-55050	GASKET, TANK CAP	1							
12	2	160610-55100	STRAINER	1							
13	2	160592-55160	GAUGE, FUEL	1							
14	1	160692-55300	COCK ASSY, FUEL	1							
17	2	160710-55360	RING	1							
18	2	160710-55370	GASKET	1							
19	2	160710-55382	FILTER	1							
20	2	160710-55390	CUP	1							
21	1	160690-55461	DAMPER, FUEL TANK	4							
22	1	160690-55140	BOLT, FAN CASE	4							
23	1	26106-060102	BOLT 6X 10 PLATED	1							
24	1	106990-44660	CLIP,HOSE	2							
25	1	160730-59370	PIPE, FUEL	1							
26	1	160820-59390	PIPE, FUEL	1							
27	1	160690-59400	PROTECTOR, PIPE	1							
28	1	124060-77680	CLAMP 10	2							
29	1	160710-78710	CLAMP, CORD	1							

Fig.6. CARBURETOR

6. CARBURETOR



Remarks
 (1) REPAIR PART.
 (REMARKS)"EFFECTIVE MACHINE NO." OF
 ENGINE IS INDICATED ON THE
 ENGINE LABEL WHICH IS SHOWN
 IN FIG.8.

OCNP3-G57700 6. CARBURETOR

(A)=GA140E-SKL1
 (B)=
 (C)=

(D)=
 (E)=
 (F)=

REF.	LEV.	PARTS NO.	DESCRIPTION	QTY						I	R
				(A)	(B)	(C)	(D)	(E)	(F)		
1	1	160598-56080	CARBURETOR ASSY	1							
2	2	160592-56540	VALVE, THROTTLE	1							
3	2	160690-56560	SCREW	1							
4	2	160690-56570	SCREW	2							
5	2	160590-56530	VALVE, CHOKE	1							
6	2	160710-56740	JET, PILOT	1							
7	2	160692-56710	SCREW	1							
8	2	181230-56380	SPRING	2							
11	2	160769-56620	FLOAT ASSY	1							
12	2	160610-56630	PIN, FLOAT	1							
13	2	160692-56640	SHAFT, THROTTLE	1							
14	2	160310-56980	SPRING, CHOKE	1							
15	2	160310-56990	BALL, STEEL	1							
16	2	160590-56650	LEVER, CHOKE	1							
17	2	160810-56580	RING, CHOKE SHAFT	1							
18	2	160810-56590	RING, CHOKE LEVER	1							
19	2	160610-56610	GASKET	1							
20	2	160769-56640	BODY, FLOAT CHAMBER	1							
21	2	160692-56671	JET, MAIN	1							
22	2	160769-56660	BOLT	1							
23	2	160810-56550	WASHER	1							
24	2	160598-56880	JET, MAIN	1							
25	2	26117-040088	BOLT M 4X 8 PLATED	1							
26	2	160640-56850	SEAL	1							
27	2	160667-56750	SCREW, ADJUSTING	1							
28	2	160702-56720	RING	1							
29	2	160692-56770	HOSE	1							
30	2	160692-56700	SEAL, RUBBER	1							
31	2	160692-56800	SEAL, RUBBER	1							
32	2	160610-56900	SCREW	1							
33	2	181230-56380	SPRING	1							
34	1	160692-56560	VALVE, NEEDLE(RUBBER)	1							1
35	1	160610-56150	GASKET, CARBURETOR	2							
36	1	160690-56160	SPACER	1							
37	1	160692-56900	ROD, CHOKE	1							

Fig.7. GOVERNOR & CONTROL DEVICE

(A)=GA140E-SKL1

(B)=

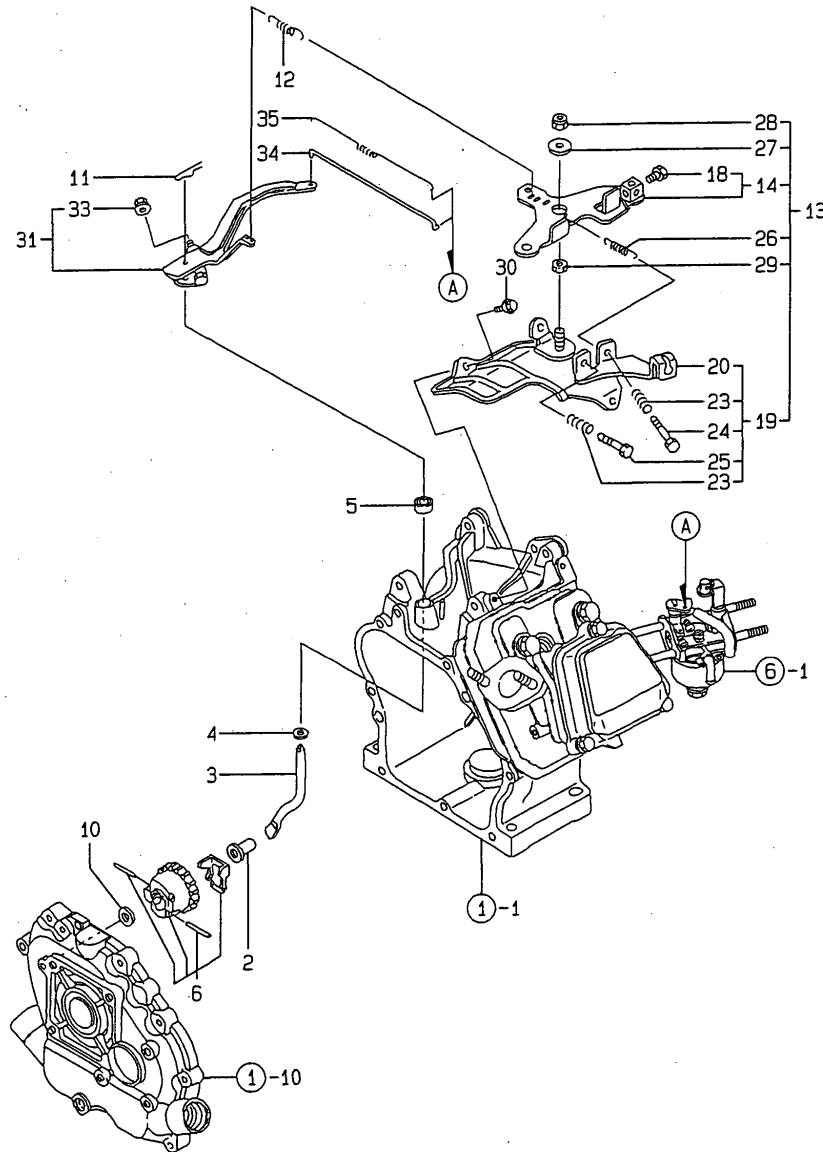
(C)=

(D)=

(E)=

(F)=

7. GOVERNOR & CONTROL DEVICE



REF.	LEV.	PARTS NO.	DESCRIPTION	QTY						I	R
				(A)	(B)	(C)	(D)	(E)	(F)		
2	1	160690-61301	SPINDLE, GOVERNOR	1							
3	1	160690-61311	SHAFT, GOV. LEVER	1							
4	1	160690-61450	WASHER	1							
5	1	114770-61600	SEAL, OIL	1							
6	1	160690-61600	GEAR ASSY, GOV.	1							
10	1	160120-76940	WASHER	1							
11	1	22372-080000	SNAP PIN (JASO 8)	1							
12	1	160594-66011	SPRING, GOVERNOR	1							
13	1	160692-66101	CONTROL ASSY	1							
14	2	160692-66051	LEVER ASSY, CONTROL	1							
18	3	26117-040088	BOLT M 4X 8 PLATED	1							
19	2	160690-66111	BASE ASSY, CONTROL	1							
20	3	160690-66143	BASE, CONTROL	1							
23	3	160520-66291	SPRING	2							
24	3	26117-040257	BOLT M 4X 25	1							
25	3	26117-040357	BOLT M 4X 35	1							
26	2	160664-66220	SPRING, RETURN	1							
27	2	160670-66350	COLLAR	1							
28	2	26347-060002	U-NUT M 6	1							
29	2	26757-060002	NUT M 6	1							
30	1	26476-060142	BOLT M 6X 14,TAPPING	3							
31	1	160690-66180	LEVER ASSY, GOVERNOR	1							
33	2	26366-060002	NUT M 6	1							
34	1	160690-66200	LINK, THROTTLE	1							
35	1	160690-66210	SPRING, TENSION	1							

Remarks
 (REMARKS)"EFFECTIVE MACHINE NO." OF
 ENGINE IS INDICATED ON THE
 ENGINE LABEL WHICH IS SHOWN
 IN FIG.8.

Fig.8. FLY.MAGNET & STARTING DEVICE

(A)=GA140E-SKL1

(B)=

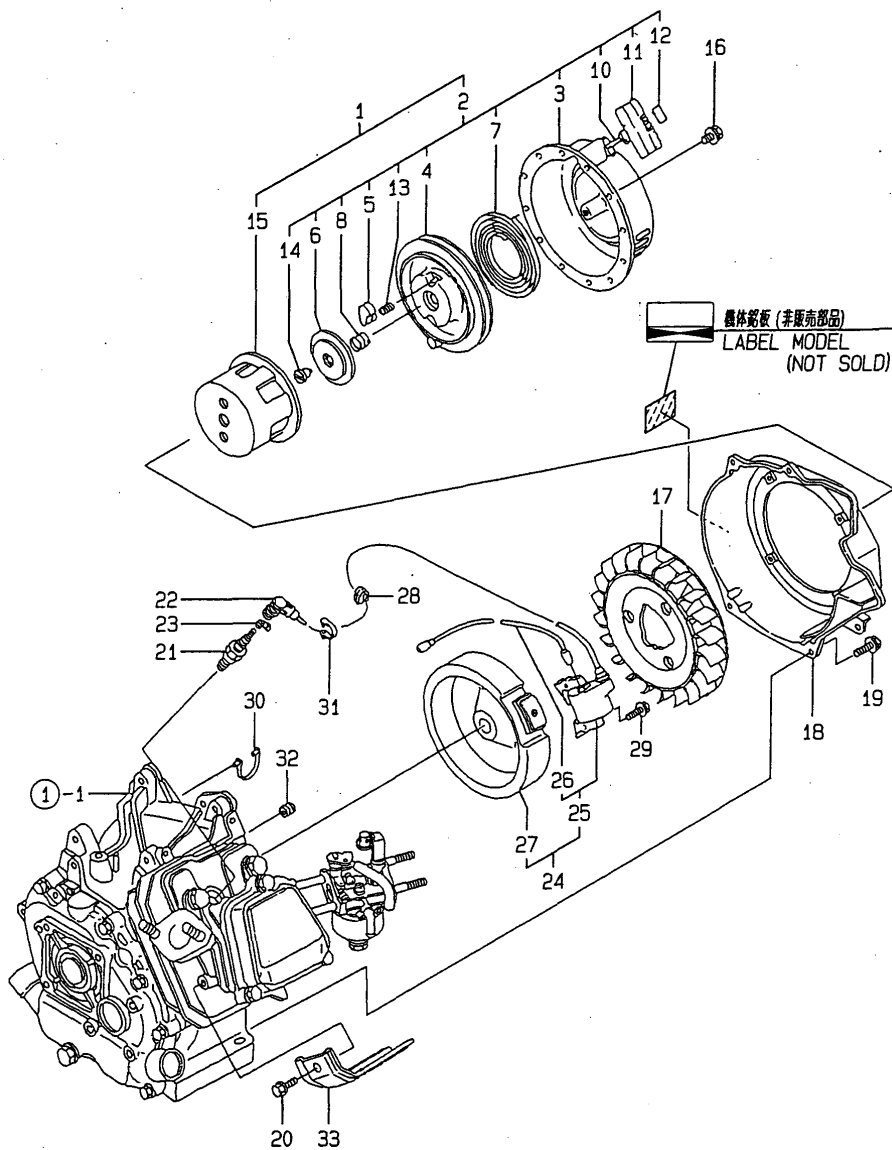
(C)=

(D)=

(E)=

(F)=

8. FLY.MAGNET & STARTING DEVICE

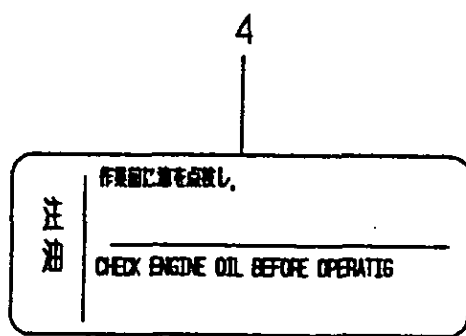
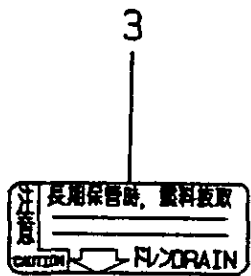
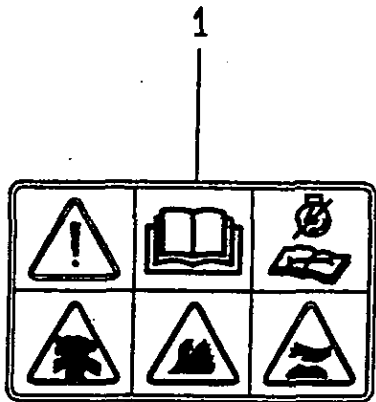


REF.	LEV.	PARTS NO.	DESCRIPTION	QTY						I	R
				(A)	(B)	(C)	(D)	(E)	(F)		
1	1	160693-76051	STARTER ASSY, RECOIL	1							
2	2	160693-76251	RECOIL ASSY	1							
3	3	160592-76510	CASE, STARTER	1							
4	3	160690-76521	REEL	1							
5	3	160690-76801	RATCHET	2							
6	3	160690-76531	GUIDE, RATCHET	1							
7	3	160690-76540	SPRING, SPIRAL	1							
8	3	160690-76561	SPRING, FRICTION	1							
10	3	160690-76631	ROPE, STARTING	1							
11	3	160690-76620	KNOB, STARTER	1							
12	3	160690-76830	CAP, KNOB	1							
13	3	160690-76570	SPRING, RETURN	2							
14	3	160690-76580	PLATE, FRICTION	1							
15	2	160690-76591	PULLEY, STARTER	1							
16	1	26106-060082	BOLT M 6X 8 PLATED	4							
17	1	160699-45010	FAN, COOLING	1							
18	1	160592-45110	CASE, FAN (RED)(10)	1							
19	1	26476-060142	BOLT M 6X 14, TAPPING	4							
20	1	26476-060142	BOLT M 6X 14, TAPPING	1							
21	1	160793-78010	PLUG, SPARK	1							
22	1	160700-78040	CAP, PLUG	1							
23	1	160700-78050	TERMINAL, PLUG	1							
24	1	160590-78092	MAGNET CMP., FLYWHEEL	1							
25	2	160590-78532	IGNITER	1							
26	3	160690-78230	CORD, STOP	1							
27	2	160590-78542	ROTOR	1							
28	1	160700-78720	GROMMET	1							
29	1	26476-060302	BOLT M 6X 30, TAPPING	2							
30	1	29610-000650	CLAMP, SPEED 065	1							
31	1	29610-000950	CLAMP, SPEED 095	1							
32	1	160341-01950	PIPE	1							
33	1	160690-45200	COVER, CYLINDER	1							

Remarks
 (REMARKS)"EFFECTIVE MACHINE NO." OF
 ENGINE IS INDICATED ON THE
 ENGINE LABEL WHICH IS SHOWN
 IN FIG.8.

Fig.9. LABEL

9. LABEL



Remarks
 (REMARKS)"EFFECTIVE MACHINE NO." OF
 ENGINE IS INDICATED ON THE
 ENGINE LABEL WHICH IS SHOWN
 IN FIG.8.

9. LABEL

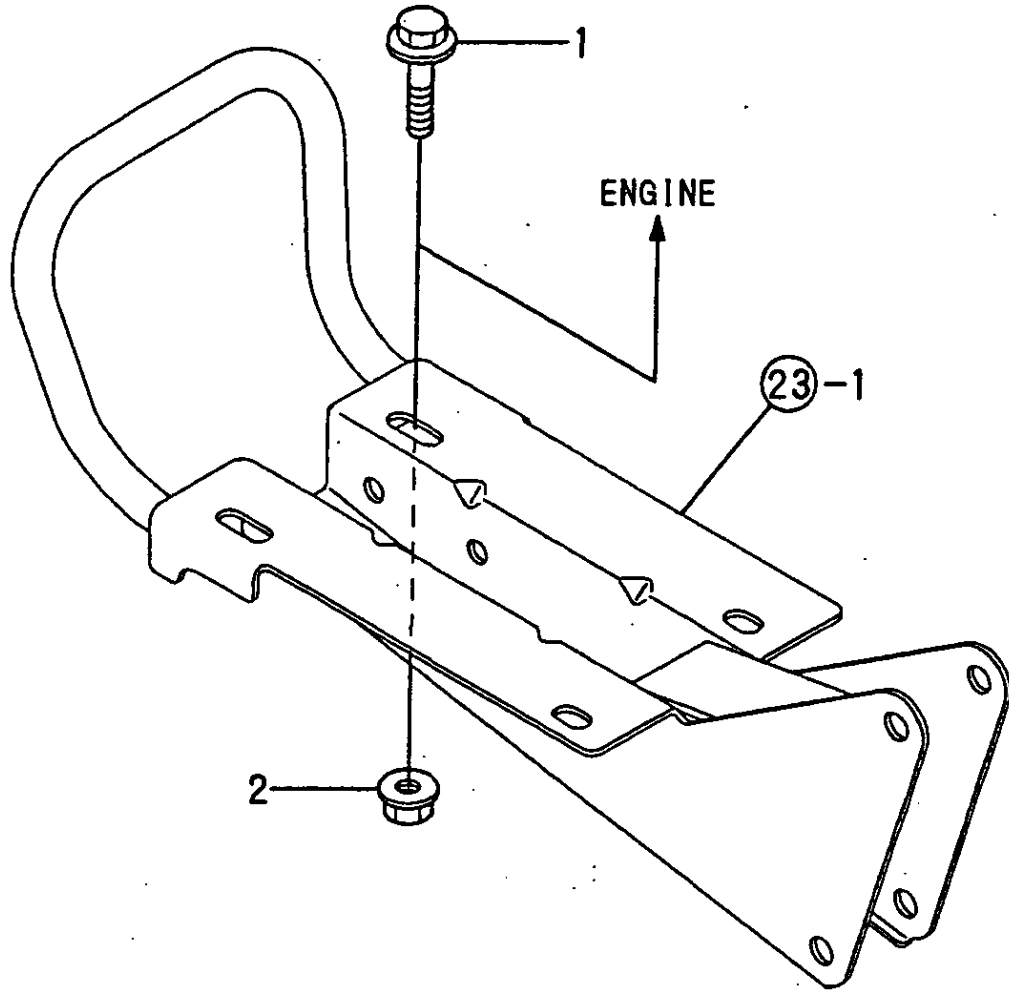
(A)=GA140E-SKL1
 (B)=
 (C)=

(D)=
 (E)=
 (F)=

REF.	LEV.	PARTS NO.	DESCRIPTION	Q'TY						I	R
				(A)	(B)	(C)	(D)	(E)	(F)		
1	1	160991-07260	LABEL	1							
2	1	160798-07100	LABEL, FINGER START	1							
3	1	160520-07272	LABEL, DRAIN	1							
4	1	160692-07370	LABEL, AIR CLEANER	1							

Fig.10. ENGINE MOUNTING

10. ENGINE MOUNTING



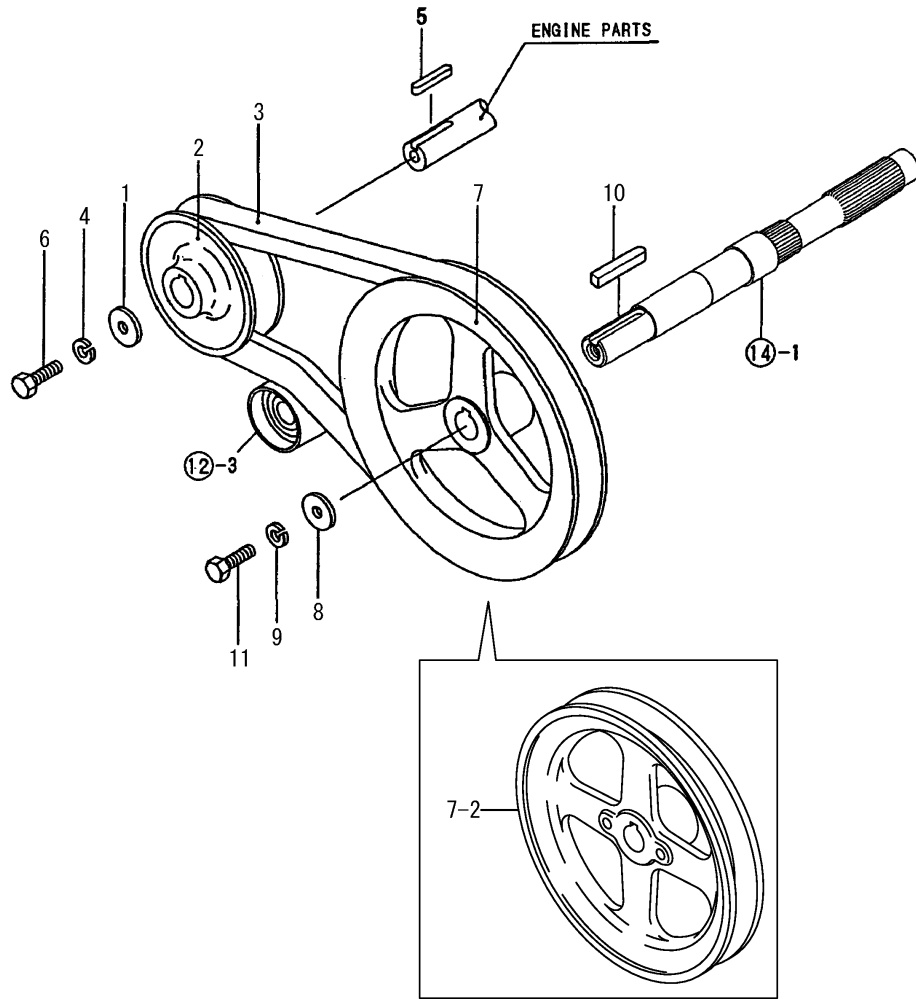
0CNP3-G57700 10. ENGINE MOUNTING

(A)=TE500
(B)=
(C)=

(D)=
(E)=
(F)=

REF.	LEV.	PARTS NO.	DESCRIPTION	QTY						I	R	
				(A)	(B)	(C)	(D)	(E)	(F)			
1	1	26107-080352	BOLT M 8X 35 PLATED	4								
2	1	26367-080002	U-NUT M 8	4								

Fig.11. ENGINE & MAIN PULLEYS



OCNP3-G57700 11. ENGINE & MAIN PULLEYS

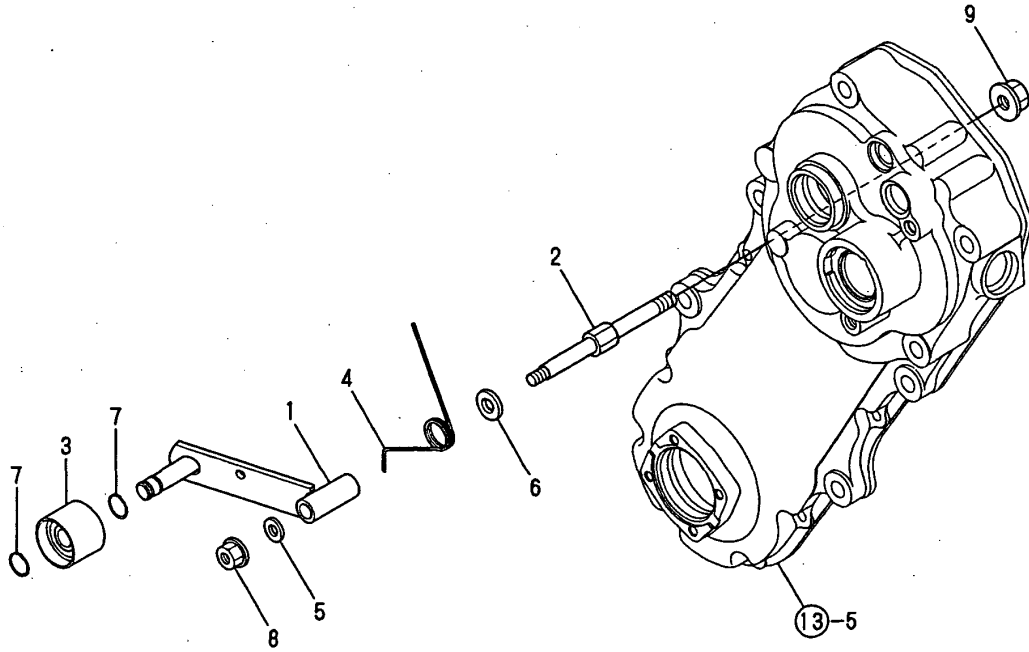
(A)=TE500
(B)=
(C)=

(D)=
(E)=
(F)=

REF.	LEV.	PARTS NO.	DESCRIPTION	QTY						I	R
				(A)	(B)	(C)	(D)	(E)	(F)		
1	1	1D1140-11420	WASHER,PULLEY	1							
2	1	1A2132-12000	V-PULLEY 89B COMPL.	1							
3	1	1A2132-12200	V-BELT SB35H	1							
4	1	22217-080000	SPRING WASHER 8	1							
5	1	22512-050300	KEY 5X 30	1							
6	1	26117-080162	BOLT M 8X 16 PLATED	1							
7	1	1A2320-13300	V-PULLEY 160	1							
7-1	1	1A2320-13301 (A=FXXXXX)	V PULLEY	1							N
7-2	1	1A2740-13300 (A=FXXXXX)	V PULLEY	1							N
8	1	22157-060000	WASHER 6	1							
9	1	22217-060000	SPRING WASHER 6	1							
10	1	22512-050301	KEY 5* 30	1							
11	1	26117-060162	BOLT M 6X 16 PLATED	1							

Fig.12. TENSION CLUTCH

12. TENSION CLUTCH



0CNP3-G57700 12. TENSION CLUTCH

(A)=TE500
(B)=
(C)=

(D)=
(E)=
(F)=

REF.	LEV.	PARTS NO.	DESCRIPTION	QTY						I	R	
				(A)	(B)	(C)	(D)	(E)	(F)			
1	1	1A2132-13000	ARM COMP.,TENSION	1								
2	1	1A2132-13060	BOLT,TENSION	1								
3	1	1A2320-13100	ROLLER COMP.,TENSION	1								
4	1	1A2132-13190	SPRING,TENSN RETURN	1								
5	1	1D1140-11420	WASHER,PULLEY	1								
6	1	22137-100000	WASHER 10,POLISHED	1								
7	1	22242-000120	CIRCLIP 12	2								
8	1	26367-080002	U-NUT M 8	1								
9	1	26377-100002	U-NUT M10	1								

Fig.13. TRANSMISSION CASE

(A)=TE500

(B)=

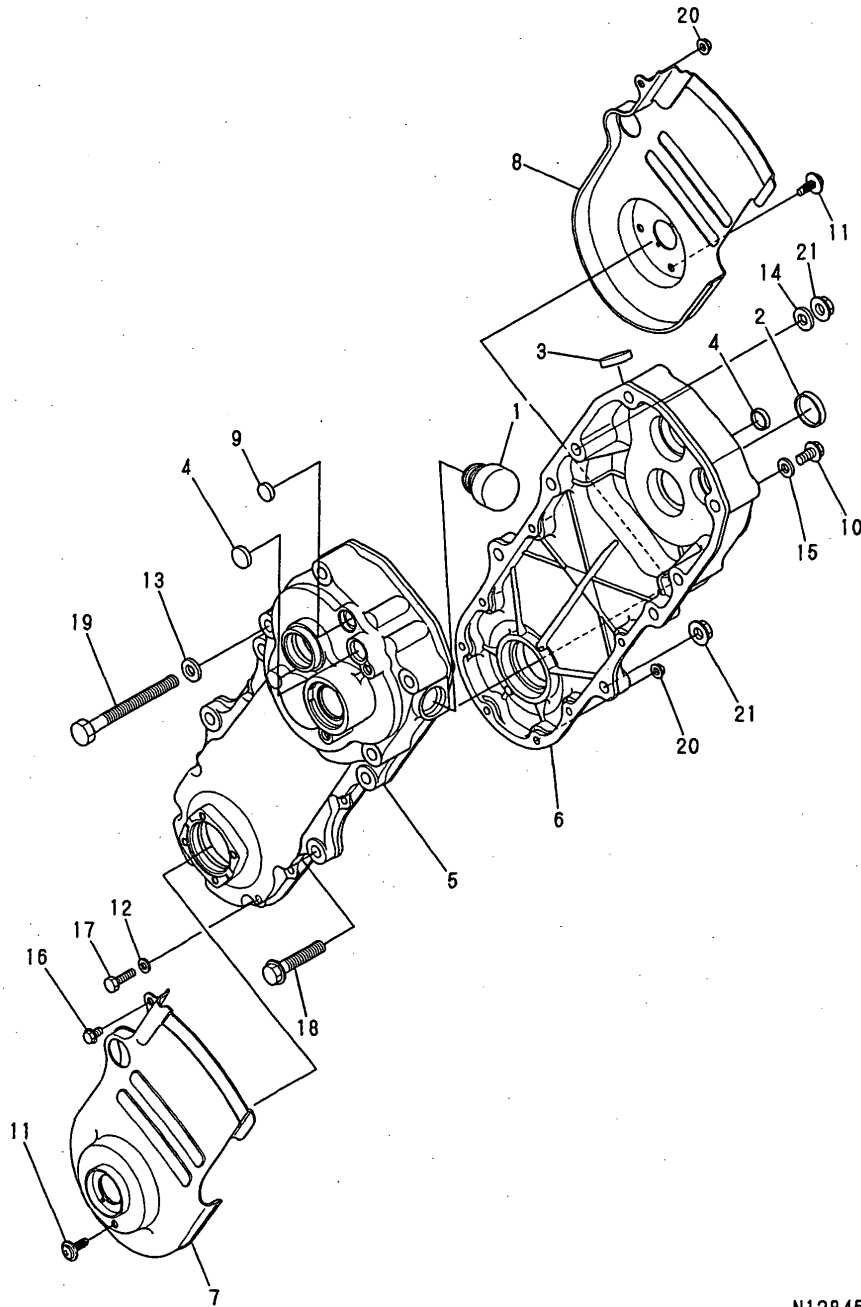
(C)=

(D)=

(E)=

(F)=

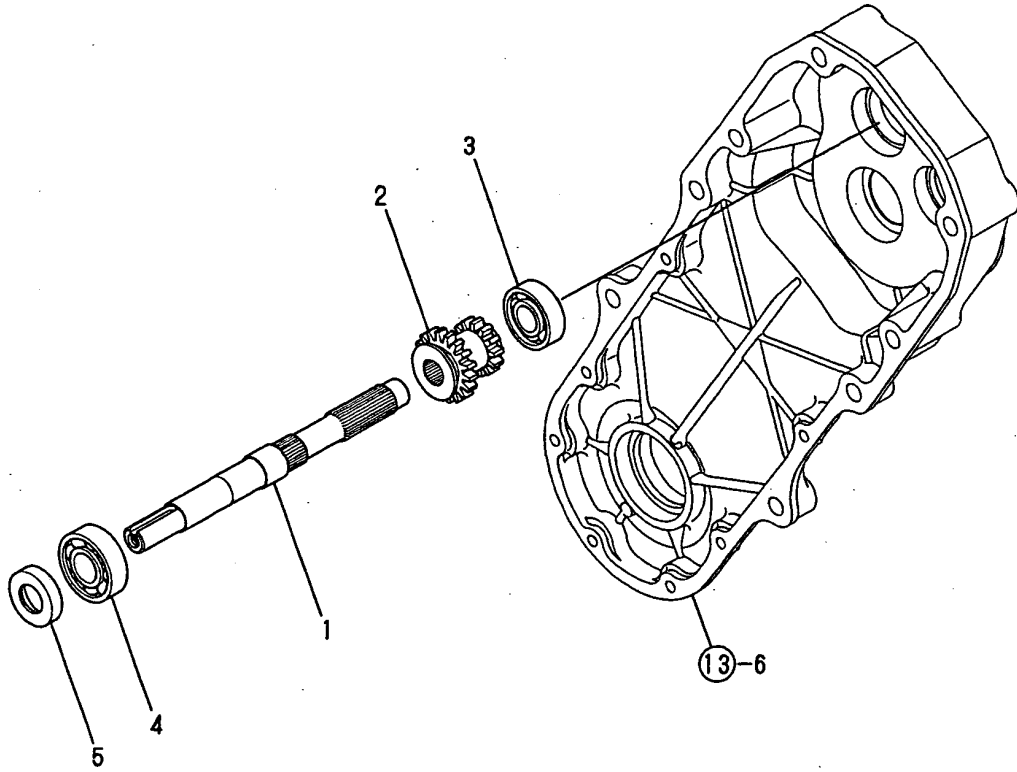
13. TRANSMISSION CASE



REF.	LEV.	PARTS NO.	DESCRIPTION	QTY						I	R
				(A)	(B)	(C)	(D)	(E)	(F)		
1	1	1A1470-20090	CAP 35,OIL FILLER	1							
2	1	1A1750-20410	CAP 30X5,SEAL	1							
3	1	1A1750-20421	CAP 26X6,SEAL	1							
4	1	1A1750-20431	CAP 18X7,SEAL	2							
5	1	1A2132-21000	CASE L,TRANSMISSION	1							
6	1	1A2132-21010	CASE R,TRANSMISSION	1							
7	1	1A2132-21070	PROTECT COVER L COMP	1							
8	1	1A2132-21080	PROTECT COVER R COMP	1							
9	1	1A2132-21150	CAP 15X4,SEAL	1							
10	1	1A2001-21250	BOLT M8X12,COLLAR HD	1							
11	1	1A1750-90200	SCREW 6X12,COLLAR HD	4							
12	1	22137-060000	WASHER 6, POLISHED	7							
13	1	22137-100000	WASHER 10,POLISHED	1							
14	1	22137-120000	WASHER 12,POLISHED	1							
15	1	23414-080000	GASKET 8, ROUND	1							
16	1	26107-060102	BOLT M 6X 10 PLATED	1							
17	1	26117-060222	BOLT 6X22	7							
18	1	26137-100502	BOLT M10X50,COLLAR	1							
19	1	26157-101002	BOLT M10X100 PLATED	1							
20	1	26367-060002	NUT M 6	8							
21	1	26377-100002	U-NUT M10	2							

Fig.14. MAIN SHAFT

14. MAIN SHAFT



0CNP3-G57700 14. MAIN SHAFT

(A)=TE500
(B)=
(C)=

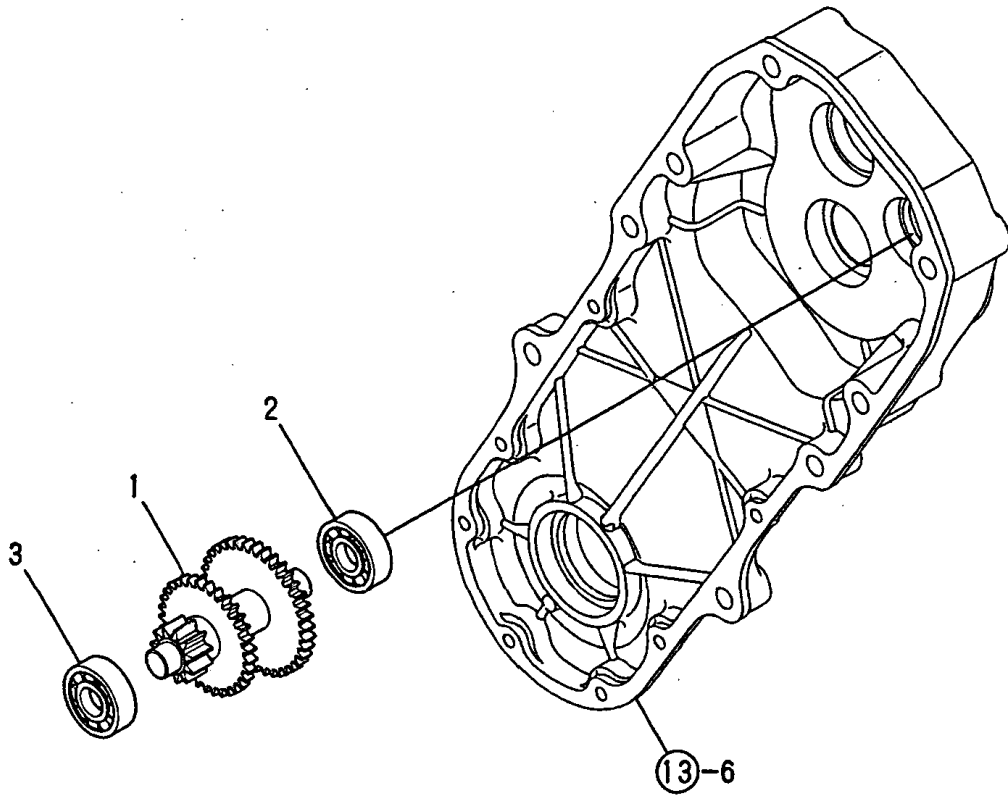
(D)=
(E)=
(F)=

REF.	LEV.	PARTS NO.	DESCRIPTION	QTY						I	R	
				(A)	(B)	(C)	(D)	(E)	(F)			
1	1	1A2132-23010	SHAFT,MAIN	1								
2	1	1A2132-23020	GEAR 18X13	1								
3	1	24101-062024	BALL BEARING	1								
4	1	24101-062034	BALL BEARING	1								
5	1	24421-173007	SEAL TC17 30 07, OIL	1								

N:Old $\xrightarrow[No]{Yes}$ New, Q:Old $\xrightarrow[Yes]{No}$ New, R:Old $\xrightarrow[Yes]{No}$ New, S:Old $\xrightarrow[No]{Yes}$ New, W:Add, Z:Discontinued, F:Interchangeable by set, K:Q'ty Change
(C)Copy Rights YANMAR CO.,LTD.

Fig.15. COUNTER SHAFT

15. COUNTER SHAFT



0CNP3-G57700 15. COUNTER SHAFT

(A)=TE500

(B)=

(C)=

(D)=

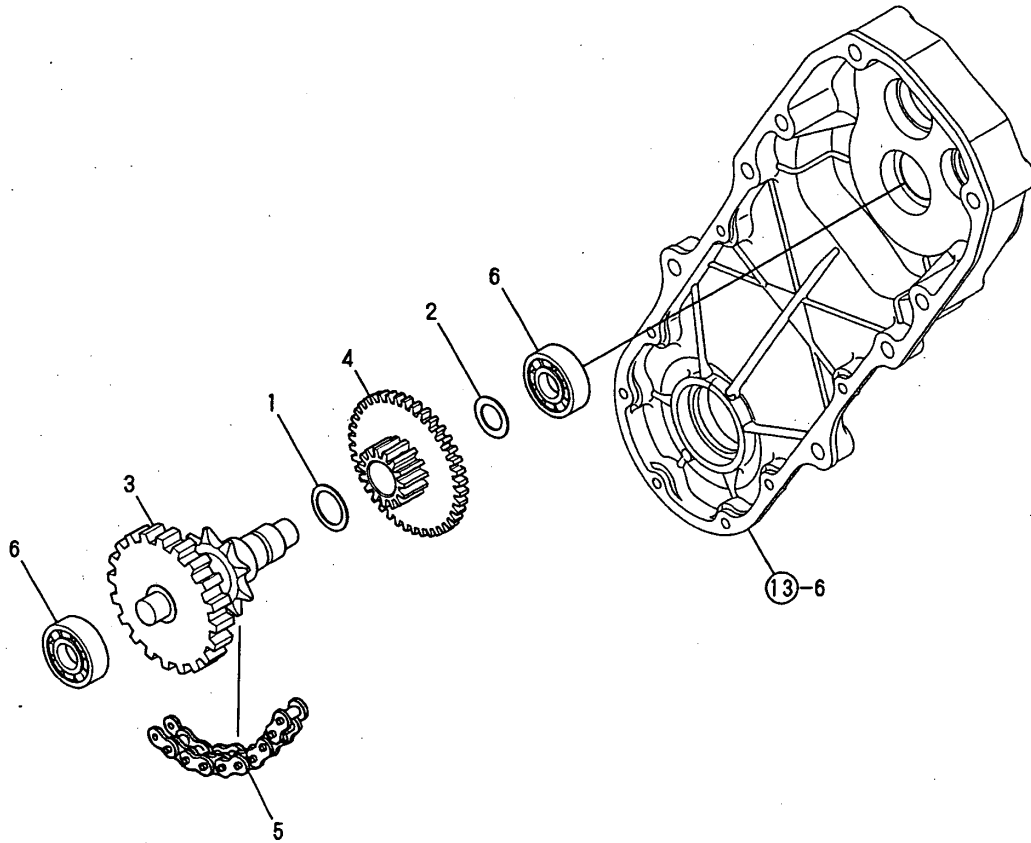
(E)=

(F)=

REF.	LEV.	PARTS NO.	DESCRIPTION	QTY						I	R
				(A)	(B)	(C)	(D)	(E)	(F)		
1	1	1A2132-23091	SHAFT COMP.,COUNTER	1							
2	1	24101-062034	BALL BEARING	1							
3	1	24101-063034	BALL BEARING	1							

Fig.16. FINAL SHAFT

16. FINAL SHAFT



0CNP3-G57700 16. FINAL SHAFT

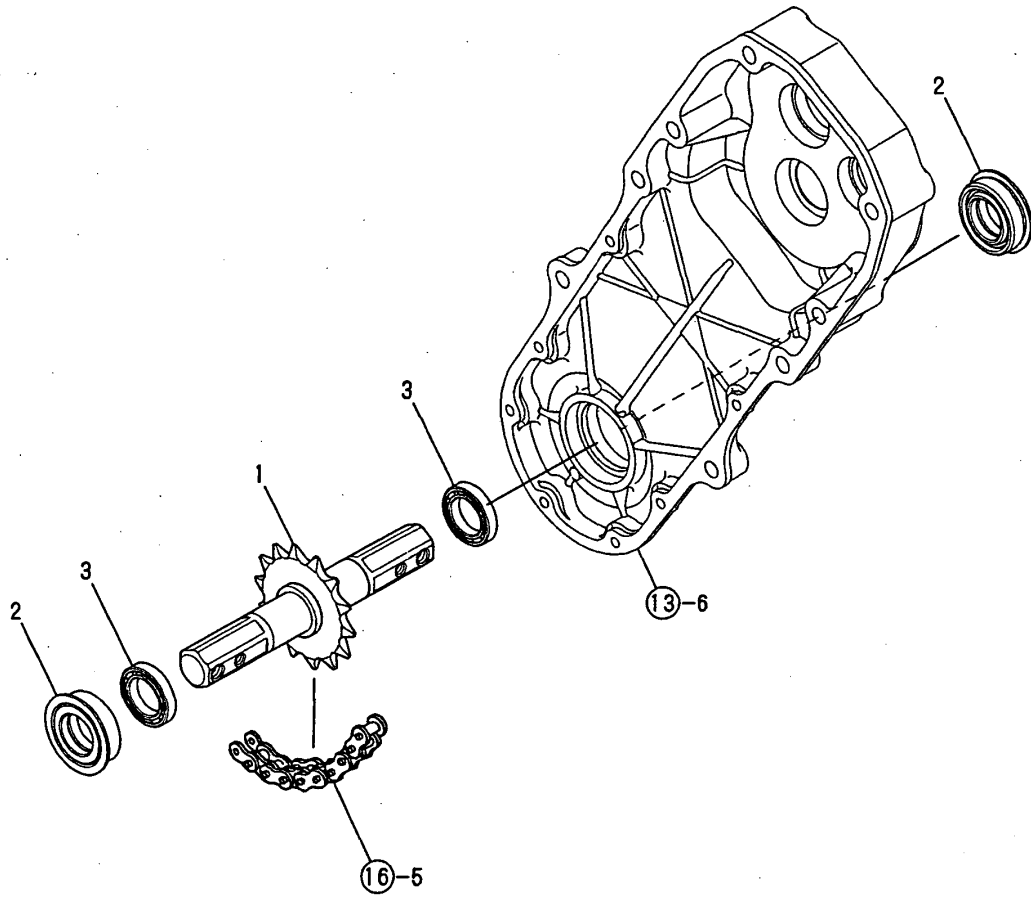
(A)=TE500
(B)=
(C)=

(D)=
(E)=
(F)=

REF.	LEV.	PARTS NO.	DESCRIPTION	QTY						I	R
				(A)	(B)	(C)	(D)	(E)	(F)		
1	1	1A2190-23160	LINER 20.2X27X1	1							
2	1	1A1735-23250	SPACER 15X24X1.0	1							
3	1	1A2132-23290	SHAFT COMP.,FINAL	1							
4	1	1A2132-23310	GEAR 40X15 COMPL.	1							
5	1	1A2132-23400	CHAIN 520HX44,ROLLR	1							
6	1	24101-063024	BALL BEARING	2							

Fig.17. AXLE

17. AXLE



0CNP3-G57700 17. AXLE

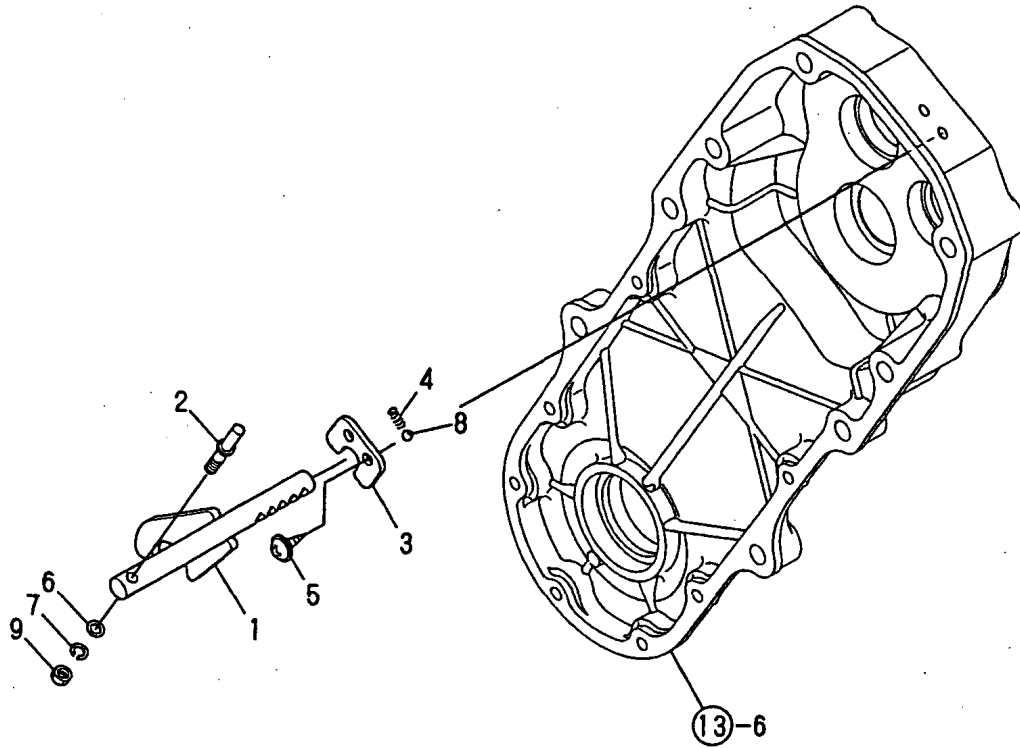
(A)=TE500
(B)=
(C)=

(D)=
(E)=
(F)=

REF.	LEV.	PARTS NO.	DESCRIPTION	QTY						I	R
				(A)	(B)	(C)	(D)	(E)	(F)		
1	1	1A2132-24100	AXLE E COMPL.	1							
2	1	1A2000-24600	SEAL 254411,OIL	2							
3	1	24101-062054	BEARING #6205	2							

Fig.18. MAIN CHANGE

18. MAIN CHANGE



OCNP3-G57700 18. MAIN CHANGE

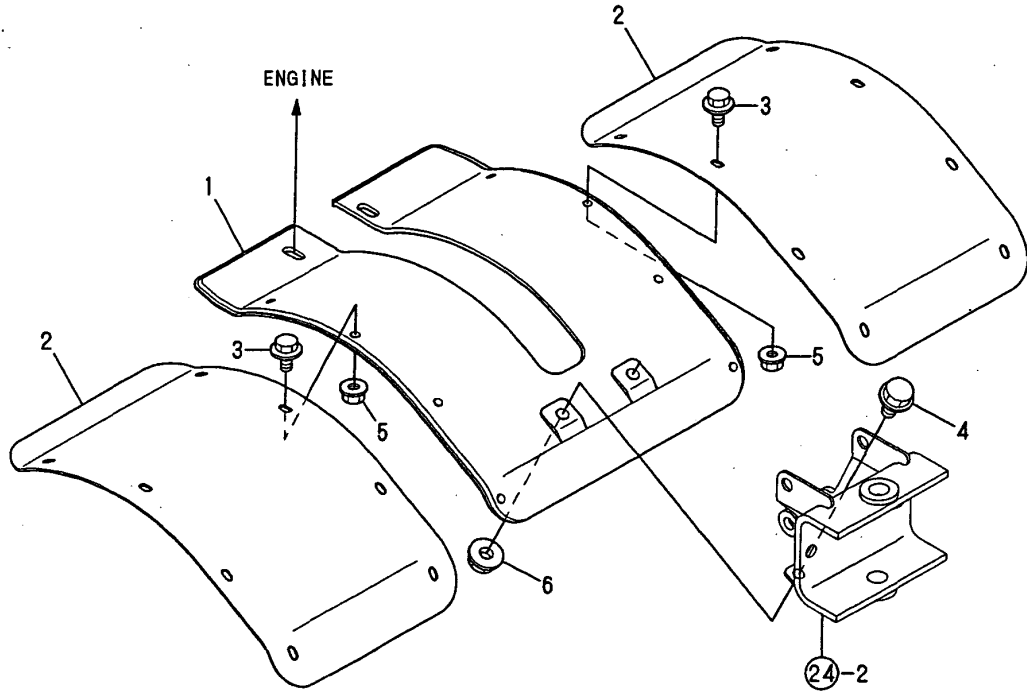
(A)=TE500
(B)=
(C)=

(D)=
(E)=
(F)=

REF.	LEV.	PARTS NO.	DESCRIPTION	Q'TY						I	R
				(A)	(B)	(C)	(D)	(E)	(F)		
1	1	1A2132-27000	SHAFT COMP.,FORK	1							
2	1	1A2132-27050	PIN,CHANGE	1							
3	1	1A2132-27100	PLATE,BALL KEEP	1							
4	1	1E6150-56040	SPRING	1							
5	1	1A1750-90200	SCREW 6X12,COLLAR HD	2							
6	1	22137-060000	WASHER 6, POLISHED	1							
7	1	22217-060000	SPRING WASHER 6	1							
8	1	24190-100001	BALL 5/16, STEEL	1							
9	1	26717-060002	NUT M 6	1							

Fig.19. FENDER

19. FENDER



0CNP3-G57700 19. FENDER

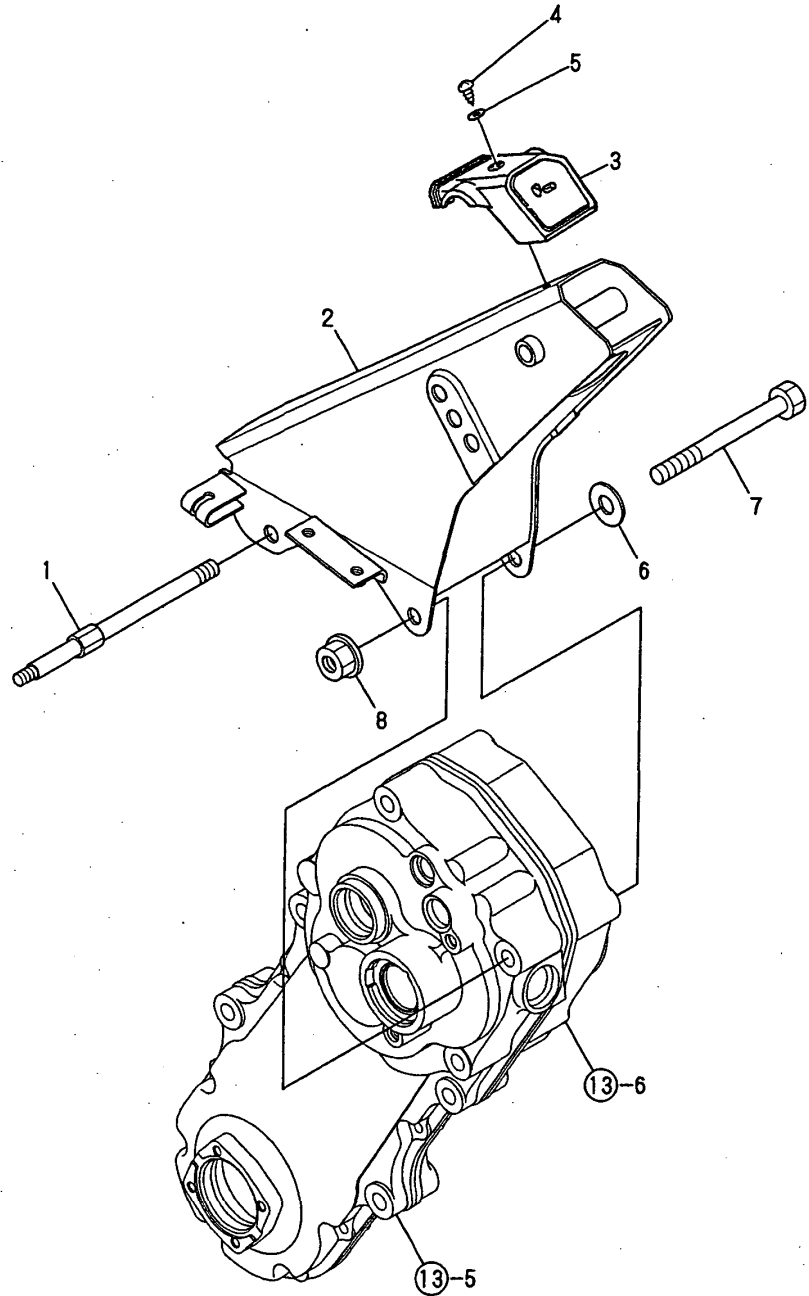
(A)=TE500
(B)=
(C)=

(D)=
(E)=
(F)=

REF.	LEV.	PARTS NO.	DESCRIPTION	QTY						I	R
				(A)	(B)	(C)	(D)	(E)	(F)		
1	1	1A2132-32010	FENDER	1							
2	1	1A2132-32020	FENDER,EXTENSION	2							
3	1	26107-060122	BOLT M 6X 12 PLATED	8							
4	1	26107-080142	BOLT M 8X 14 PLATED	2							
5	1	26367-060002	NUT M 6	8							
6	1	26367-080002	U-NUT M 8	2							

Fig.20. HANDLE COLUMN

20. HANDLE COLUMN



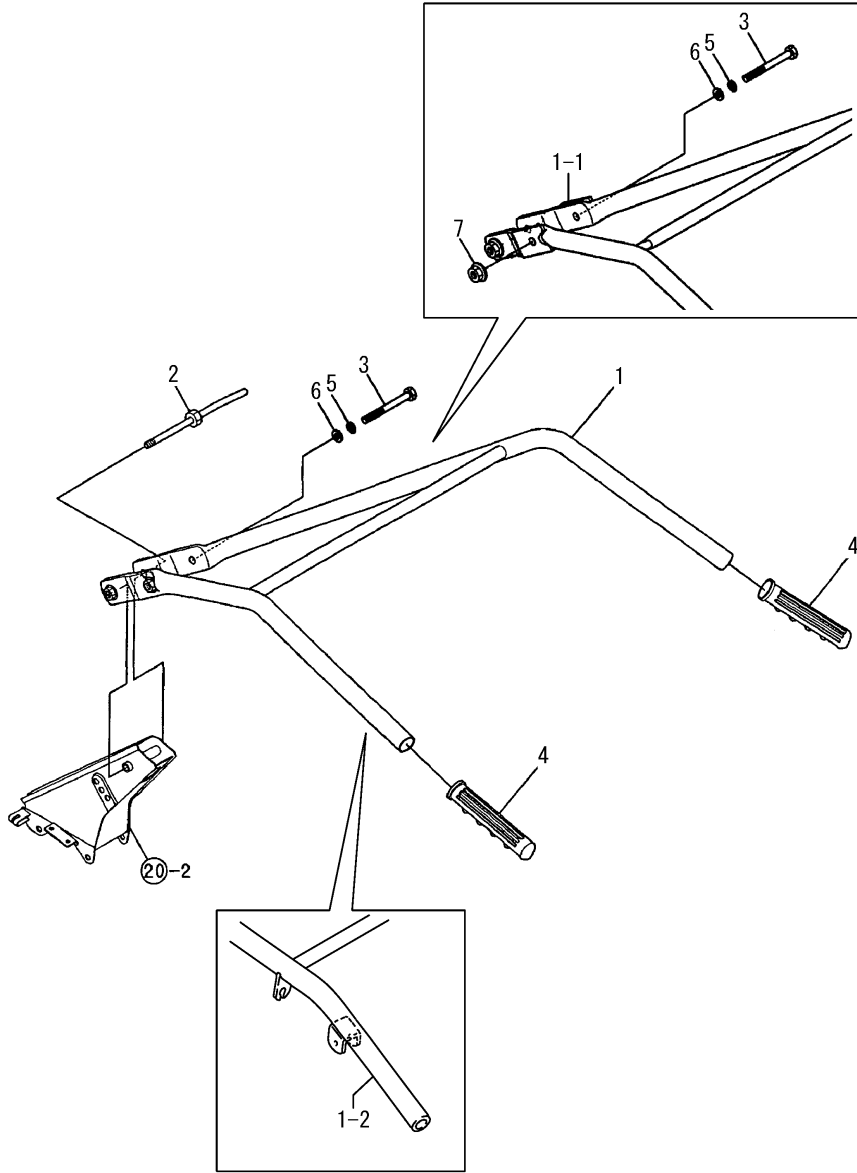
0CNP3-G57700 20. HANDLE COLUMN

(A)=TE500
(B)=
(C)=

(D)=
(E)=
(F)=

REF.	LEV.	PARTS NO.	DESCRIPTION	Q'TY						I	R
				(A)	(B)	(C)	(D)	(E)	(F)		
1	1	1A2132-51090	BOLT,HANDLE COLUMN	1							
2	1	1A2132-51300	FRAME COMP.,HANDLE	1							
3	1	1A2130-51400	COVER,HANDLE FRAME	1							
4	1	1A1750-90050	SCREW 5X10,TAPPING	1							
5	1	1A1750-90150	WASHER 5,PLAIN	1							
6	1	22137-100000	WASHER 10,POLISHED	1							
7	1	26157-101002	BOLT M10X100 PLATED	1							
8	1	26377-100002	U-NUT M10	2							

Fig.21. HANDLE

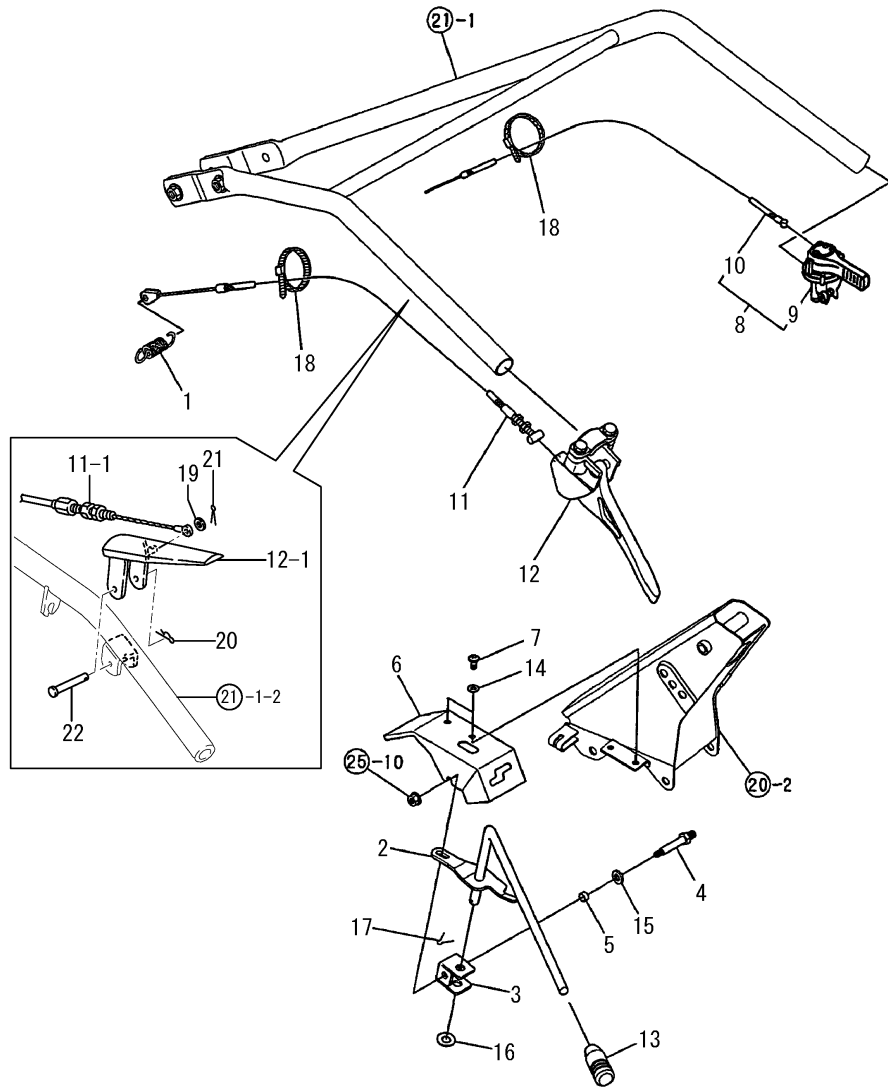


(A)=TE500
(B)=
(C)=

(D)=
(E)=
(F)=

REF.	LEV.	PARTS NO.	DESCRIPTION	QTY						I	R
				(A)	(B)	(C)	(D)	(E)	(F)		
1	1	1A2132-51500 (A=FXXXXX)	HANDLE E COMPL.	1							Z
1-1	1	1A2509-51500 (A=FXXXXX)	HANDLE E COMPL.	1							W
1-2	1	1A2509-51600 (A=F012898)	HANDLE CMP	1							S
2	1	1A2132-51600	BOLT COMP.,HANDLE		1						
3	1	1A2132-51640	BOLT M10X125		1						
4	1	192040-56220	GRIP,HANDLE		2						
5	1	22287-100000	WASHER 10		2						
6	1	22117-100000	WASHER 10		1						
7	1	26737-100002 (A=FXXXXX)	NUT M10		1						W

Fig.22. CONTROL LEVER(E



OCNP3-G57700 22. CONTROL LEVER(E

(A)=TE500

(B)=

(C)=

(D)=

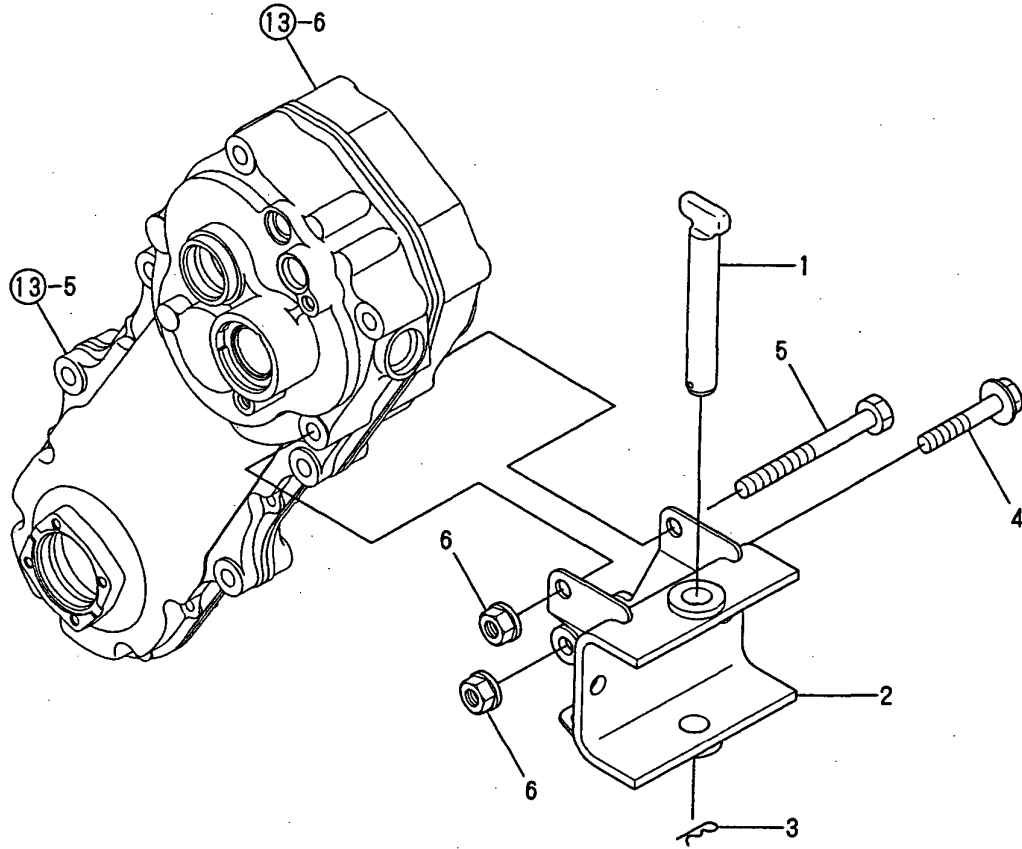
(E)=

(F)=

REF.	LEV.	PARTS NO.	DESCRIPTION	Q'TY						I	R
				(A)	(B)	(C)	(D)	(E)	(F)		
1	1	1A1105-16001	SPRING,MN.CLTCH LVR.	1							
2	1	1A2132-55001	LEVER COMP.,CHANGE	1							
3	1	1A2132-55040	FULCRUM,CHANGE	1							
4	1	1A2132-55080	PIN,CHANGE FULCRUM	1							
5	1	1A2132-55090	BUSH 8X8,COILED	1							
6	1	1A2132-55210	COVER,CHANGE	1							
7	1	1A1735-55350	SCREW 6X12,PAN HD.	2							
8	1	1A2132-55500	LEVER E ASSY.,ACCEL.	1							
9	2	1A2132-55510	LEVER E,ACCELERATOR	1							
10	2	1A2132-55520	WIRE ACCELE	1							
11	1	1A2132-55550	WIRE,MAIN CLUTCH	1							
11-1	1	1A2132-55650	WIRE, CLUTCH MAIN	1							S
(A=F012898)											
12	1	1A2132-55610	LEVER E,CLUTCH	1							
12-1	1	1A2009-55400	LEVER COMP.,DEADMAN	1							S
(A=F012898)											
13	1	1E6570-65750	GRIP,CONT.LEVER BLK.	1							
14	1	1A1750-90120	WASHER 6,SPRING BLK.	2							
15	1	22137-080000	WASHER 8, POLISHED	1							
16	1	22137-100000	WASHER 10,POLISHED	1							
17	1	22411-200200	COTTER PIN 2.0X20	1							
18	1	1A2320-55600	BAND, CABLE	2							
19	1	22137-060000	WASHER 6, POLISHED	1							W
(A=F012898)											
20	1	22372-080000	SNAP PIN (JASO 8)	1							W
(A=F012898)											
21	1	22417-200100	COTTER PIN 2.0X10	1							W
(A=F012898)											
22	1	22486-080400	PIN, H8X40	1							W
(A=F012898)											

Fig.24. REAR HITCH

24. REAR HITCH



0CNP3-G57700 24. REAR HITCH

(A)=TE500
(B)=
(C)=

(D)=
(E)=
(F)=

REF.	LEV.	PARTS NO.	DESCRIPTION	QTY						I	R
				(A)	(B)	(C)	(D)	(E)	(F)		
1	1	1A2132-61260	PIN,HITCH	1							
2	1	1A2132-61500	HITCH COMPL.	1							
3	1	22360-160000	SNAP PIN 16	1							
4	1	26137-100552	BOLT M10X55,COLLAR	1							
5	1	26156-100952	BOLT 10X95	1							
6	1	26377-100002	U-NUT M10	2							

Fig.25. BELT COVER

(A)=TE500

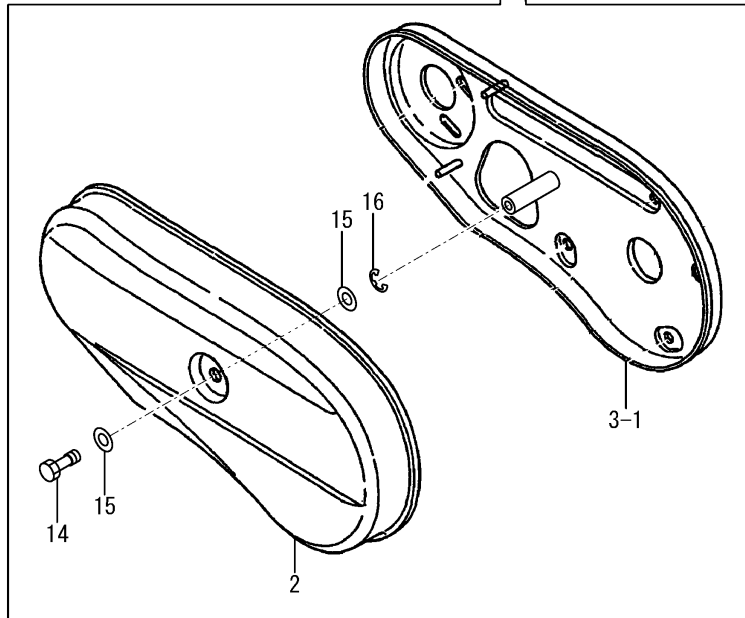
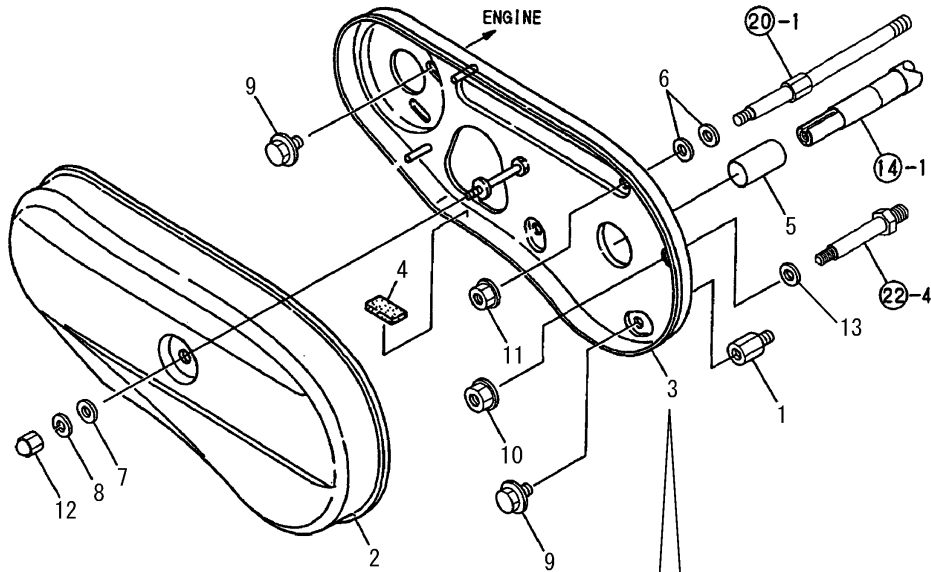
(B)=

(C)=

(D)=

(E)=

(F)=



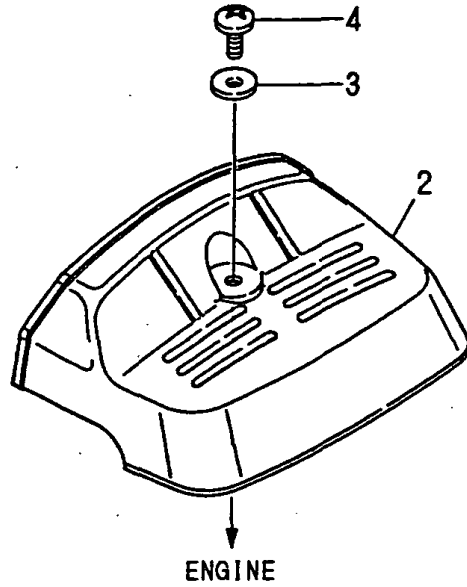
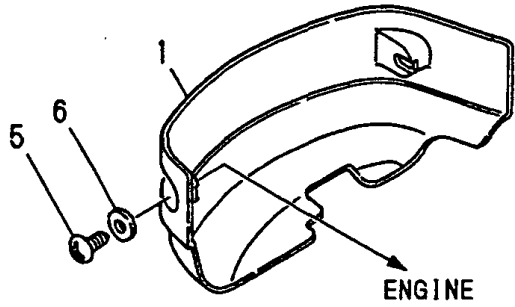
REF.	LEV.	PARTS NO.	DESCRIPTION	QTY						I	R
				(A)	(B)	(C)	(D)	(E)	(F)		
1	1	1A1490-10340	STUD 22.5,BACK COVER	1							
2	1	1A2132-62010	COVER,BELT	1							
3	1	1A2132-62100	COVER COMP.,BACK	1							
3-1	1	1A2132-62200	COVER COMP.,BACK	1							F
		(A=FZZZZZ)									
4	1	1A2000-62481	CUSHION	1							
5	1	1A2132-62400	GUARD,MAIN SHAFT	1							
6	1	22137-080000	WASHER 8, POLISHED	2							
7	1	22157-080000	WASHER 8	1							Z
		(A=FZZZZZ)									
8	1	22217-080000	SPRING WASHER 8	1							Z
		(A=FZZZZZ)									
9	1	26107-080122	BOLT M 8X 12 PLATED	3							
10	1	26367-060002	NUT M 6	1							
11	1	26367-080002	U-NUT M 8	1							
12	1	26668-080002	CAP NUT M 8	1							Z
		(A=FZZZZZ)									
13	1	1A2132-27230	WASHER	1							W
		(A=FZZZZZ)									
14	1	1A2132-62050	BOLT	1							W
		(A=FZZZZZ)									
15	1	22137-080000	WASHER 8, POLISHED	2							W
		(A=FZZZZZ)									
16	1	22272-000060	CIRCLIP E- 6	1							W
		(A=FZZZZZ)									

Remarks

(1)INTERCHANGEABLE BY SIMULTANEOUS REPLACEMENT WITH REF.14,15 & 16.

Fig.26. BONNET W

26. BONNET W



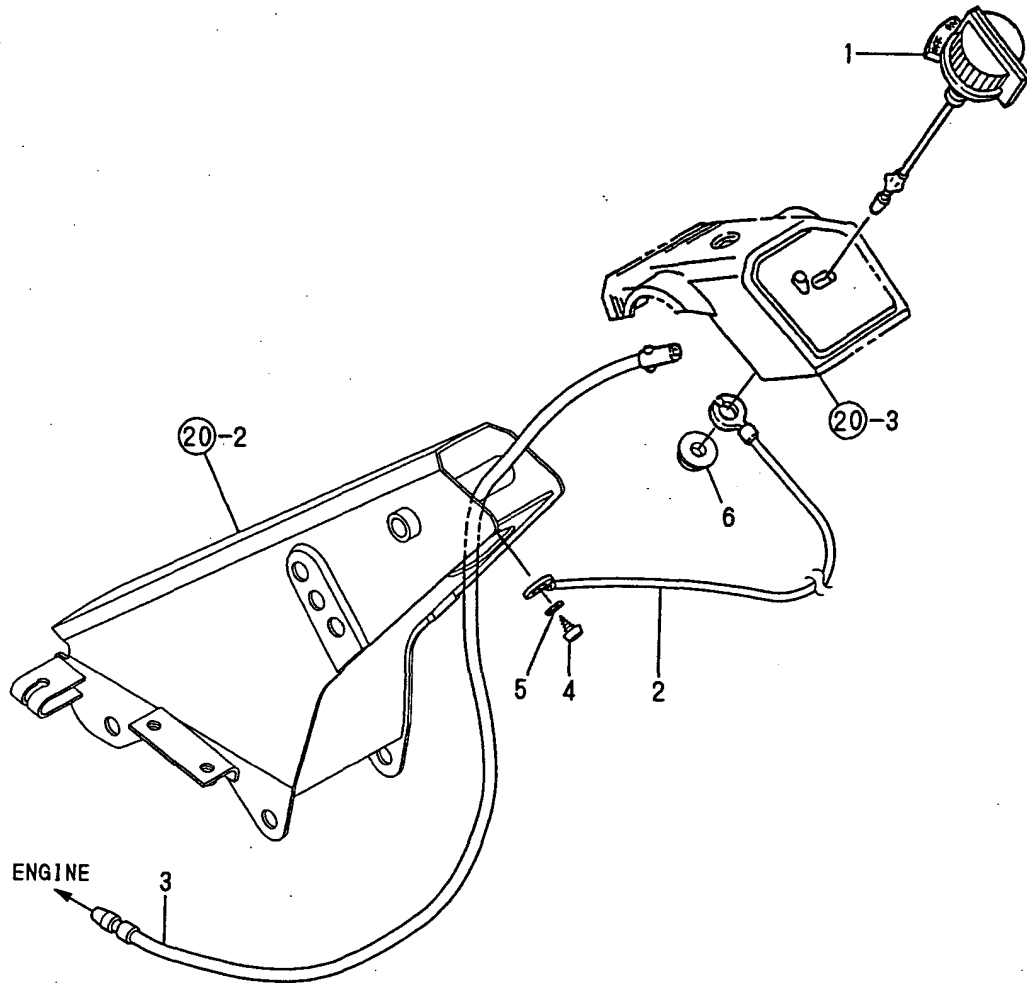
(A)=TE500
(B)=
(C)=

(D)=
(E)=
(F)=

REF.	LEV.	PARTS NO.	DESCRIPTION	QTY						I	R	
				(A)	(B)	(C)	(D)	(E)	(F)			
1	1	1A2172-64100	MASK,FRONT	1								
2	1	1A2150-64200	COVER, REAR (40	1								
3	1	1A2000-64210	WASHER 6X19X1.0	1								
4	1	1A2000-64220	SCREW 6X16	1								
5	1	1A1750-90050	SCREW 5X10,TAPPING	2								
6	1	1A1750-90150	WASHER 5,PLAIN	2								

Fig.28. ELECTRICAL PARTS

28. ELECTRICAL PARTS



0CNP3-G57700 28. ELECTRICAL PARTS

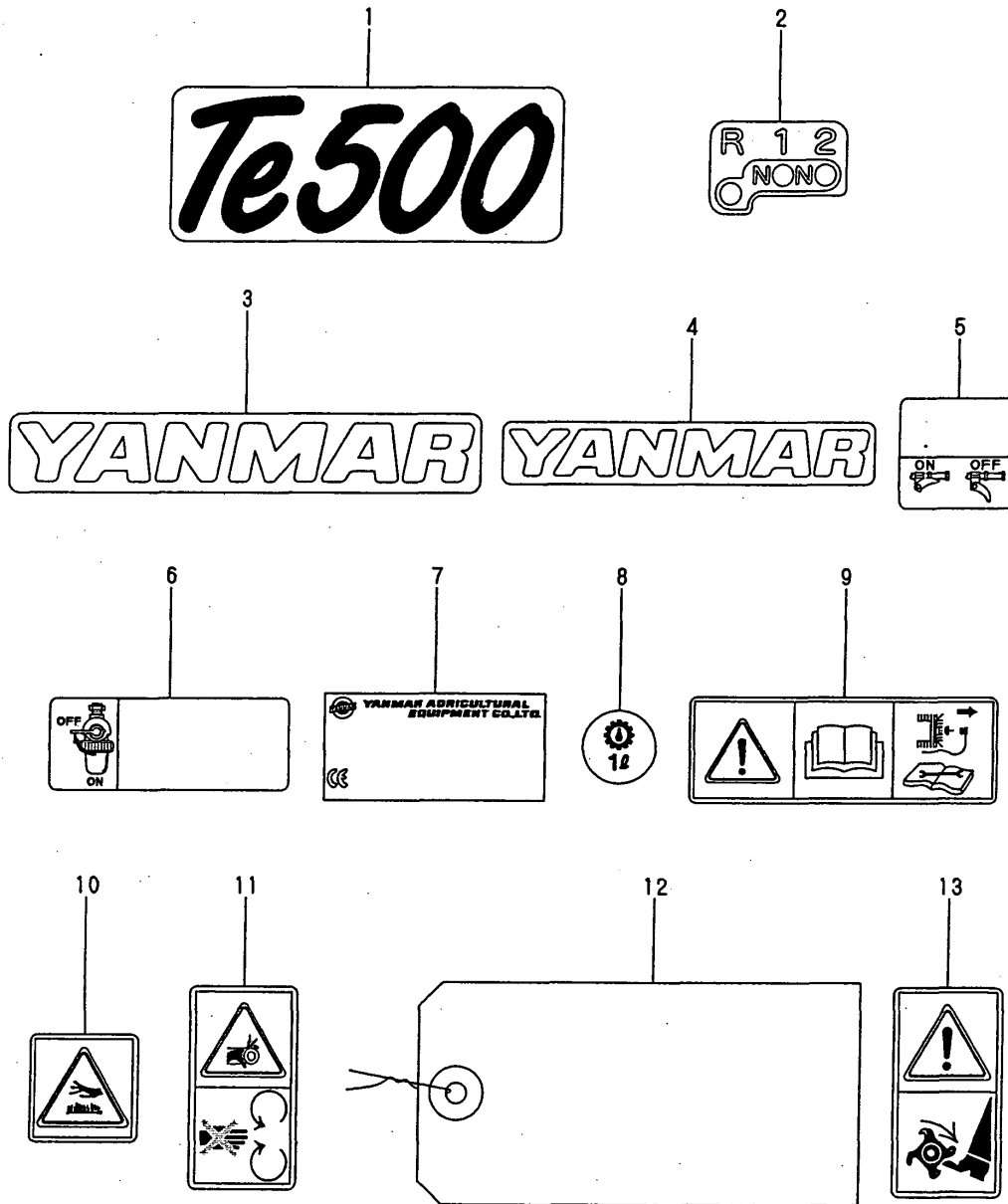
(A)=TE500
(B)=
(C)=

(D)=
(E)=
(F)=

REF.	LEV.	PARTS NO.	DESCRIPTION	QTY						I	R
				(A)	(B)	(C)	(D)	(E)	(F)		
1	1	1A1750-40800	SWITCH,STOP	1							
2	1	1A1750-40850	CORD,EARTH	1							
3	1	1A2000-83100	CORD,STOP SWITCH	1							
4	1	1A1750-90050	SCREW 5X10,TAPPING	1							
5	1	1A1750-90150	WASHER 5,PLAIN	1							
6	1	26367-080002	U-NUT M 8	1							

Fig.29. LABELS

29. LABELS



OCNP3-G57700 29. LABELS

(A)=TE500

(B)=

(C)=

(D)=

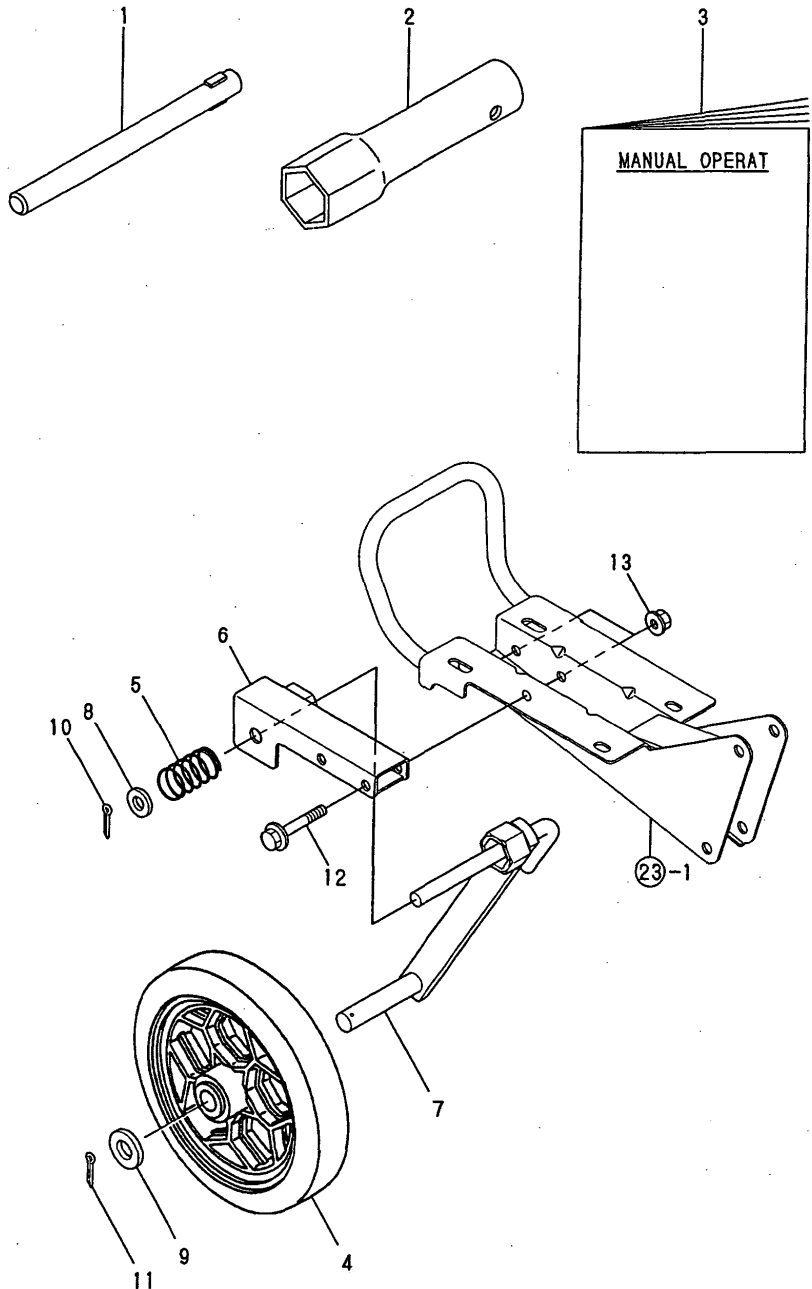
(E)=

(F)=

REF.	LEV.	PARTS NO.	DESCRIPTION	QTY						I	R
				(A)	(B)	(C)	(D)	(E)	(F)		
1	1	1A2132-86020	LABEL,MODEL	1							
2	1	1A2132-86070	MARK,TRAVEL CHANGE	1							
3	1	1A2150-86080	LABEL,FRONT MASK	1							
4	1	1A2130-86320	LABEL,FUEL TANK	1							
5	1	1A2099-86340	LABEL,MAIN CLUTCH	1							
6	1	1A2099-86360	LABEL,FUEL COCK	1							
8	1	1A2138-86701	LABEL 1,OIL	1							
9	1	1A2199-86700	MARK,HANDLING CAUTN	1							
10	1	1A2199-86720	MARK,HI-TEMP.CAUTION	1							
11	1	1A2199-86840	MARK,BELT CVR.CAUTN	1							
13	1	1A2199-86900	MARK,ROTARY CAUTION	1							

Fig.30. TOOLS & ACCESSORIES

30. TOOLS & ACCESSORIES



OCNP3-G57700 30. TOOLS & ACCESSORIES

(A)=TE500

(B)=

(C)=

(D)=

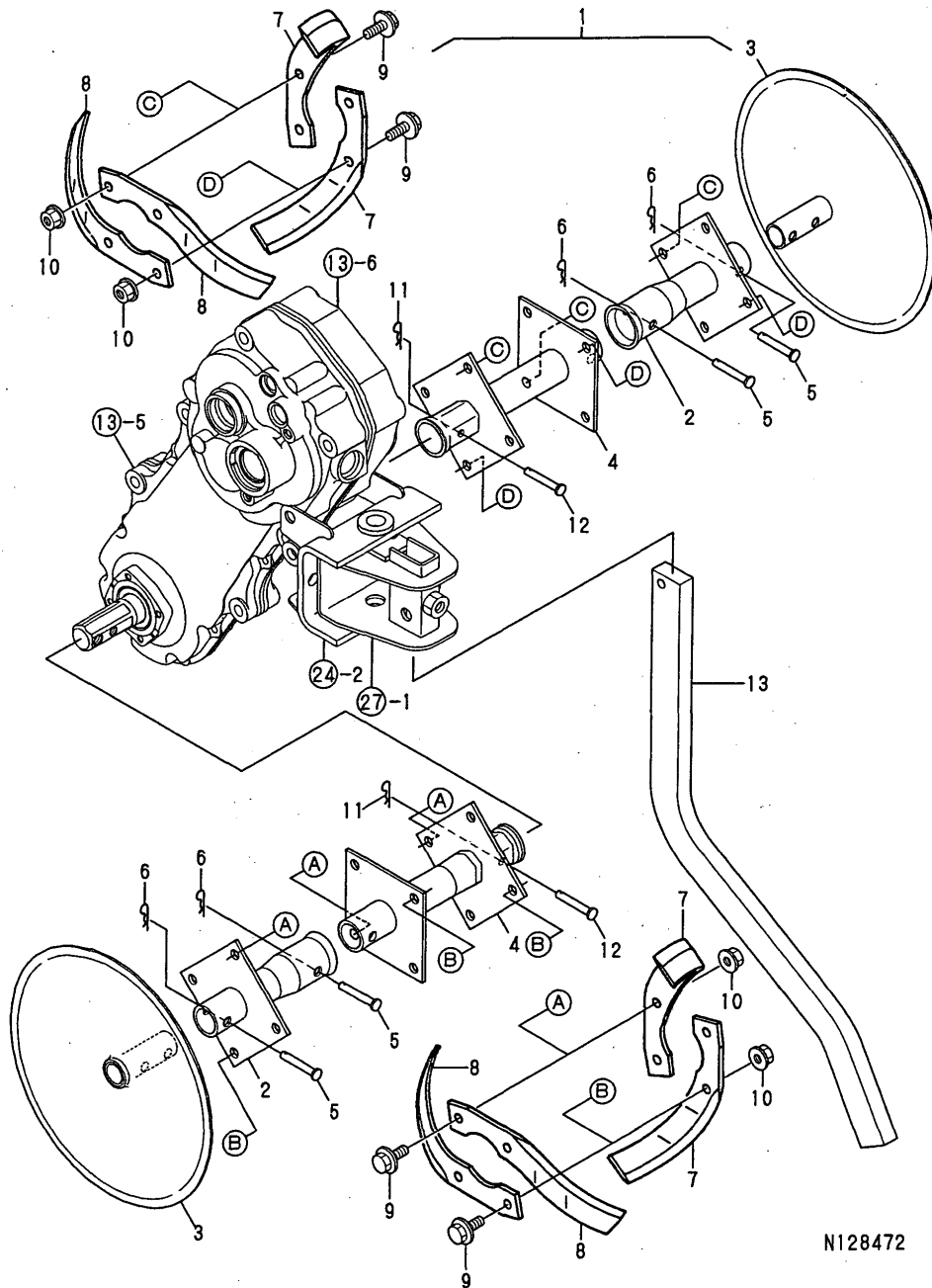
(E)=

(F)=

REF.	LEV.	PARTS NO.	DESCRIPTION	QTY						I	R
				(A)	(B)	(C)	(D)	(E)	(F)		
1	1	1A2320-87000	BAR,WRENCH	1							
2	1	160110-92700	BOX, SPANNER	1							
3	1	1A2132-88050	MANUAL,OPERATION	1							
3-1	1	1A2132-88051 (A=FZZZZZ)	MANUAL	1							N
4	1	1A2170-72200	WHEEL 195,TAIL	1							
5	1	1A2130-90050	SPRING 20X45	1							
6	1	1A2132-90800	ARM SUPPORT CMP	1							
7	1	1A2132-90850	ARM,FRONT CMP.	1							
8	1	22137-120000	WASHER 12,POLISHED	2							
9	1	22137-160000	WASHER 16,POLISHED	2							
10	1	22417-250180	COTTER PIN 2.5X18	1							
11	1	22417-250250	COTTER PIN 2.5X25	1							
12	1	26107-080502	BOLT M 8X 50 PLATED	2							
13	1	26367-080002	U-NUT M 8	2							

Fig.31. TILLING ROTOR(E)

31. TILLING ROTOR(E)



N128472

OCNP3-G57700 31. TILLING ROTOR(E)

(A)=TE500

(B)=

(C)=

(D)=

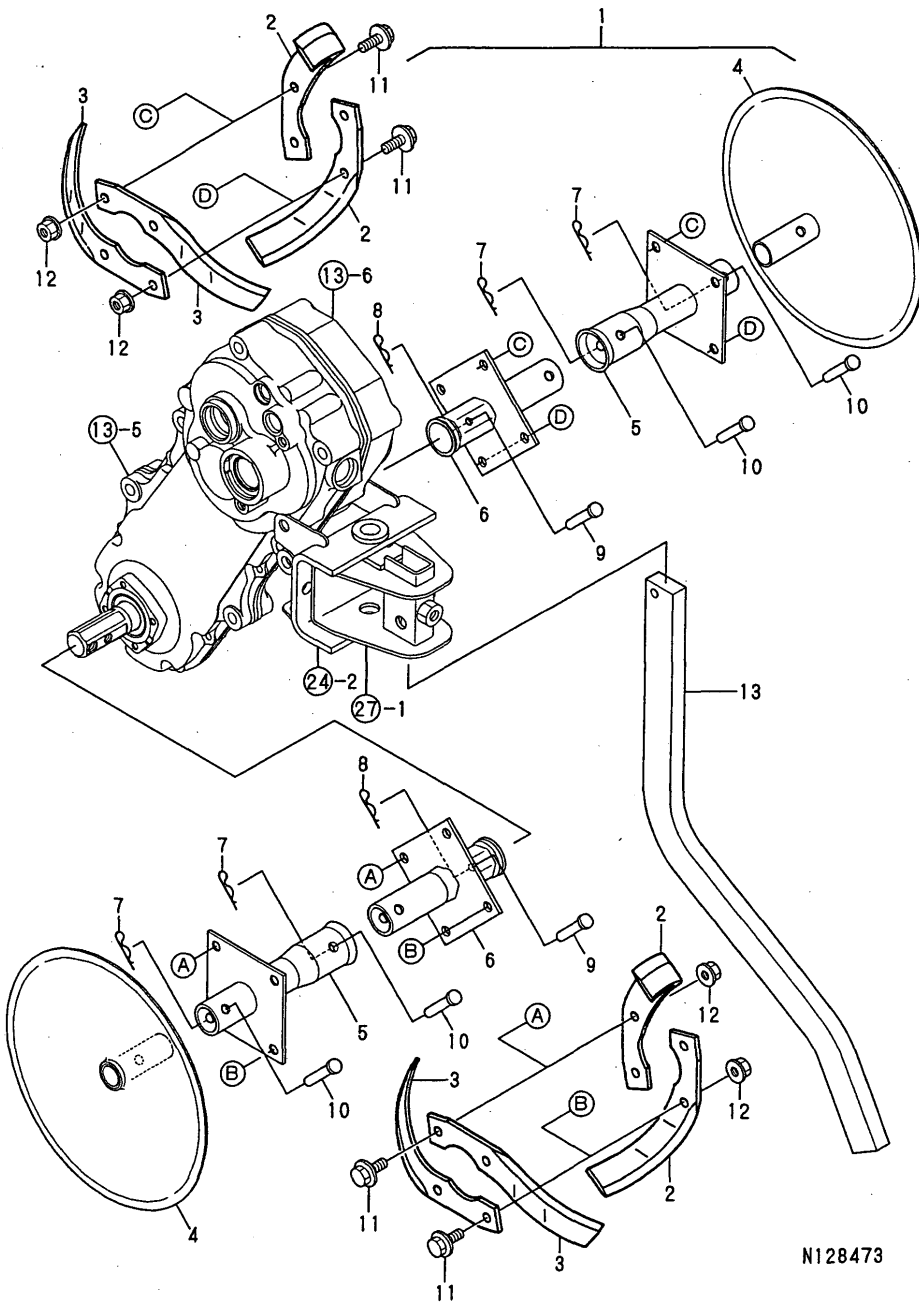
(E)=

(F)=

REF.	LEV.	PARTS NO.	DESCRIPTION	QTY						I	R
				(A)	(B)	(C)	(D)	(E)	(F)		
1	1	7A2132-31400	ROTOR E ASSY.,TILLG	1							
2	2	1A2132-31150	SHAFT CMP.,OTR.ROTOR	2							
3	2	1A2132-31200	DISC COMPL.	2							
4	2	1A2132-31500	SHAFT E COMP.,ROTOR	2							
5	2	1A1540-46010	PIN 8X35,FLAT HEAD	4							
6	2	1A1540-46020	PIN 8,SNAP	4							
7	2	1A1402-91180	TAIN L ROTOR	12							
7-1	2	1A1402-91181	ROTOR TINE L	12							N
(A=FXXXXXX)											
8	2	1A1402-91190	TAIN R ROTOR	12							
8-1	2	1A1402-91191	ROTOR TINE R	12							N
(A=FXXXXXX)											
9	2	26107-080202	BOLT M 8X 20 PLATED	24							
10	2	26367-080002	U-NUT M 8	24							
11	2	22372-060000	SNAP PIN 6	2							
12	2	22486-060400	PIN 6*40	2							
13	1	1S0090-60000	BAR,RESISTANCE	1							

Fig.32. TILLING ROTOR(EB)

32. TILLING ROTOR(EB)



N128473

OCNP3-G57700 32. TILLING ROTOR(EB)

(A)=TE500

(B)=

(C)=

(D)=

(E)=

(F)=

REF.	LEV.	PARTS NO.	DESCRIPTION	QTY						I	R
				(A)	(B)	(C)	(D)	(E)	(F)		
1	1	7A2132-31410	ROTOR EB AS.,TILLING	1							
2	2	1A2132-31050	TINE L,ROTOR	8							
3	2	1A2132-31060	TINE R,ROTOR	8							
4	2	1A2132-31200	DISC COMPL.	2							
5	2	1A2132-31240	SHAFT J CMP,OT.ROTOR	2							
6	2	1A2132-31410	SHAFT E CMP,IN.ROTOR	2							
7	2	1A1540-46020	PIN 8,SNAP	4							
8	2	22372-060000	SNAP PIN 6	2							
9	2	22486-060400	PIN 6*40	2							
10	2	22486-080400	PIN 8X 40	4							
11	2	26107-080202	BOLT M 8X 20 PLATED	16							
12	2	26367-080002	U-NUT M 8	16							
13	1	1S0090-60000	BAR,RESISTANCE	1							

Part Number Index

All parts are stipulated in the order of part numbers.

(Depending on the area in which the part is used.)

This index will display the location of the part according to each part number.

PARTS No. INDEX

PARTS No.	Fig.	Ref.No.
104200-59170	1	9
		17
106990-44660	5	24
114250-45310	5	1
114252-13950	3	18
114270-01600	1	5
114770-61600	7	5
124060-77680	5	28
160110-01870	1	21
160110-92700	30	2
160120-76940	7	10
160310-56980	6	14
160310-56990	6	15
160341-01950	8	32
160393-55050	5	11
160490-14200	4	10
160492-12630	3	11 -1
160492-12940	3	12 -1
160520-07272	9	3
160520-66291	7	23
160590-11010	2	5
160590-11100	2	10
160590-11110	2	11
160590-14400	4	11
160590-14571	4	9
160590-21200	4	17
160590-21210	4	18
160590-22300	4	27
160590-56530	6	5
160590-56650	6	16
160590-78092	8	24
160590-78532	8	25
160590-78542	8	27
160592-14051	4	1
160592-45110	8	18
160592-55160	5	13
160592-56540	6	2
160592-76510	8	3
160593-03180	2	2
160594-66011	7	12
160598-01330	2	3
160598-04600	3	1
160598-12500	3	7
160598-12600	3	8
160598-12610	3	9
160598-12630	3	11
160598-12640	3	12
160598-13510	3	16
160598-13600	3	15
160598-22010	4	21

PARTS No.	Fig.	Ref.No.
160598-56080	6	1
160598-56250	3	5
160598-56880	6	24
160610-01690	1	8
		16
160610-02220	1	6
		13
160610-04201	2	4
160610-04910	4	13
160610-21290	4	19
160610-55100	5	12
160610-56150	3	4
	6	35
160610-56610	6	19
160610-56630	6	12
160610-56900	6	32
160640-56850	6	26
160664-66220	7	26
160667-56750	6	27
160670-66350	7	27
160690-03050	2	1
160690-11120	2	12
160690-11180	2	13
160690-11200	2	14
160690-11221	2	15
160690-11271	2	16
160690-11280	2	17
160690-11290	2	18
160690-11300	2	20
160690-11310	2	21
160690-12261	3	2
160690-13200	3	14
160690-45200	8	33
160690-55140	5	22
160690-55461	5	21
160690-56160	6	36
160690-56560	6	3
160690-56570	6	4
160690-59400	5	27
160690-61301	7	2
160690-61311	7	3
160690-61450	7	4
160690-61600	7	6
160690-66111	7	19
160690-66143	7	20
160690-66180	7	31
160690-66200	7	34
160690-66210	7	35
160690-76521	8	4
160690-76531	8	6

PARTS No.	Fig.	Ref.No.
160690-76540	8	7
160690-76561	8	8
160690-76570	8	13
160690-76580	8	14
160690-76591	8	15
160690-76620	8	11
160690-76631	8	10
160690-76801	8	5
160690-76830	8	12
160690-78230	8	26
160692-07370	9	4
160692-13530	3	17
160692-55300	5	14
160692-56560	6	34
160692-56640	6	13
160692-56671	6	21
160692-56700	6	30
160692-56710	6	7
160692-56770	6	29
160692-56800	6	31
160692-56900	6	37
160692-66051	7	14
160692-66101	7	13
160693-76051	8	1
160693-76251	8	2
160699-45010	8	17
160700-78040	8	22
160700-78050	8	23
160700-78720	8	28
160702-56720	6	28
160710-01760	1	18
160710-55061	5	4
160710-55360	5	17
160710-55370	5	18
160710-55382	5	19
160710-55390	5	20
160710-56740	6	6
160710-78710	5	29
160730-59370	5	25
160763-12600	3	3
160769-56620	6	11
160769-56640	6	20
160769-56660	6	22
160793-78010	8	21
160798-07100	9	2
160810-56550	6	23
160810-56580	6	17
160810-56590	6	18
160820-59390	5	26
160991-07260	9	1

PARTS No.	Fig.	Ref.No.
181230-56380	6	8
		33
192040-56220	21	4
1A1105-16001	22	1
1A1402-91180	31	7
1A1402-91181	31	7 -1
1A1402-91190	31	8
1A1402-91191	31	8 -1
1A1470-20090	13	1
1A1490-10340	25	1
1A1540-46010	31	5
1A1540-46020	31	6
	32	7
1A1735-23250	16	2
1A1735-55350	22	7
1A1750-20410	13	2
1A1750-20421	13	3
1A1750-20431	13	4
1A1750-40800	28	1
1A1750-40850	28	2
1A1750-90050	20	4
	26	5
	28	4
1A1750-90120	22	14
1A1750-90150	20	5
	26	6
	28	5
1A1750-90200	13	11
	18	5
1A2000-24600	17	2
1A2000-62481	25	4
1A2000-64210	26	3
1A2000-64220	26	4
1A2000-83100	28	3
1A2001-21250	13	10
1A2009-55400	22	12 -1
1A2099-86340	29	5
1A2099-86360	29	6
1A2130-51400	20	3
1A2130-86320	29	4
1A2130-90050	30	5
1A2132-12000	11	2
1A2132-12200	11	3
1A2132-13000	12	1
1A2132-13060	12	2
1A2132-13190	12	4
1A2132-21000	13	5
1A2132-21010	13	6
1A2132-21070	13	7
1A2132-21080	13	8

PARTS No. INDEX

PARTS No.	Fig.	Ref.No.
1A2132-21150	13	9
1A2132-23010	14	1
1A2132-23020	14	2
1A2132-23091	15	1
1A2132-23290	16	3
1A2132-23310	16	4
1A2132-23400	16	5
1A2132-24100	17	1
1A2132-27000	18	1
1A2132-27050	18	2
1A2132-27100	18	3
1A2132-27230	25	13
1A2132-31050	32	2
1A2132-31060	32	3
1A2132-31150	31	2
1A2132-31200	31	3
	32	4
1A2132-31240	32	5
1A2132-31410	32	6
1A2132-31500	31	4
1A2132-32010	19	1
1A2132-32020	19	2
1A2132-51090	20	1
1A2132-51300	20	2
1A2132-51500	21	1
1A2132-51600	21	2
1A2132-51640	21	3
1A2132-55001	22	2
1A2132-55040	22	3
1A2132-55080	22	4
1A2132-55090	22	5
1A2132-55210	22	6
1A2132-55500	22	8
1A2132-55510	22	9
1A2132-55520	22	10
1A2132-55550	22	11
1A2132-55610	22	12
1A2132-55650	22	11 -1
1A2132-61000	23	1
1A2132-61260	24	1
1A2132-61500	24	2
1A2132-62010	25	2
1A2132-62050	25	14
1A2132-62100	25	3
1A2132-62200	25	3 -1
1A2132-62400	25	5
1A2132-75500	27	1
1A2132-86020	29	1
1A2132-86070	29	2
1A2132-88050	30	3

PARTS No.	Fig.	Ref.No.
1A2132-88051	30	3 -1
1A2132-90800	30	6
1A2132-90850	30	7
1A2138-86701	29	8
1A2150-64200	26	2
1A2150-86080	29	3
1A2170-72200	30	4
1A2172-64100	26	1
1A2190-23160	16	1
1A2199-86700	29	9
1A2199-86720	29	10
1A2199-86840	29	11
1A2199-86900	29	13
1A2320-13100	12	3
1A2320-13300	11	7
1A2320-13301	11	7 -1
1A2320-55600	22	18
1A2320-87000	30	1
1A2509-51500	21	1 -1
1A2509-51600	21	1 -2
1A2740-13300	11	7 -2
1D1140-11420	11	1
	12	5
1E6150-56040	18	4
1E6570-65750	22	13
1S0090-60000	31	13
	32	13
760590-01500	1	10
760590-21700	4	14
760590-23700	4	29
760593-55703	5	2
760598-01560	1	1
760598-22500	4	23
7A2132-31400	31	1
7A2132-31410	32	1

PARTS No.	Fig.	Ref.No.
-----------	------	---------

PARTS No.	Fig.	Ref.No.
-----------	------	---------



YANMAR CO.,LTD.